

Recombinant Mouse MLKL Protein (1-472 aa), His-tagged

Cat. No. MLKL-1706M Lot. No. (See product label)

SPECIFICATION

Product Overview	Recombinant Mouse MLKL Protein (1-472 aa) is produced by Yeast expression system. This protein is fused with a 6xHis tag at the N-terminal. Protein Description: Full Length.
Species	Mouse
Source	Yeast
ProteinLength	1-472 aa
Description	Pseudokinase that plays a key role in TNF-induced necroptosis, a programmed cell death process. Activated following phosphorylation by RIPK3, leading to homotrimerization, localization to the plasma mbrane and execution of programmed necrosis characterized by calcium influx and plasma mbrane damage. Does not have protein kinase activity.
Form	Tris-based buffer,50% glycerol
Molecular Mass	56.3 kDa
AA Sequence	MDKLGQIIKLGQLIYEQCEKMKYCRKQCQRLGNRVHGLLQPLQRLQAQGKKNLPDD ITAALGRFDEVLKEANQQIEKFSKSHIWKFVSVGNDKILFHEVNEKLRD VWEE LLLL LQVYHWNTVSDVSQPASWQQEDRQDAEEDGNENMKVILMQLQISVEEINKTLKQC SLKPTQEIPQDLQIKEIPKEHLGPPWTKLKT SKMSTIYRGEYHRSPVTIKVFNNPQAE SVGIVRFTFNDEIKTMKKFDSPNLRIFGICIDQTVKPPEFSIVMEYCELGTLRELLDRE

 Tel: 1-631-559-9269 1-516-512-3133

 Email: info@creative-biomart.com  Fax: 1-631-938-8127

 45-1 Ramsey Road, Shirley, NY 11967, USA

KDLTMSVRSLLVLRARGLYRLHHSETLHRNIISSSSFLVAGGYQVKLAGFELSKTQN
 SISRTAKSTKAERSSSTIYVSPERLKNPFCLYDIKAEIYSFGIVLWEIATGKIPFEGCDS
 KKIRELVAEDKKQEPVGQDCPELLREIINECRAHEPSQRPSVDGRSLSGRERILERLS
 AVEESTDKKV

Purity > 90% as determined by SDS-PAGE.

Notes Repeated freezing and thawing is not recommended. Store working aliquots at 4 centigrade for up to one week.

Storage The shelf life is related to many factors, storage state, buffer ingredients, storage temperature and the stability of the protein itself. Generally, the shelf life of liquid form is 6 months at -20 centigrade/-80 centigrade. The shelf life of lyophilized form is 12 months at -20 centigrade/-80 centigrade.

Concentration A hardcopy of COA with reconstitution instruction is sent along with the products.

GENE INFORMATION

Gene Name [Mlkl mixed lineage kinase domain-like \[Mus musculus \]](#)

Official Symbol [MLKL](#)

Synonyms MLKL; mixed lineage kinase domain-like; 9130019I15Rik;

Gene ID [74568](#)

mRNA Refseq [NM_029005](#)

Protein Refseq [NP_083281](#)

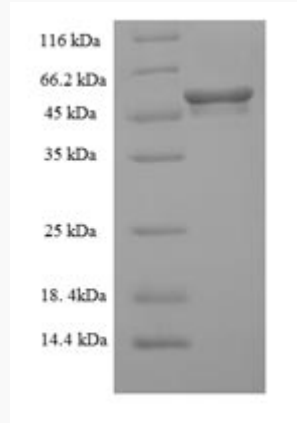
 Tel: 1-631-559-9269 1-516-512-3133

 Email: info@creative-biomart.com  Fax: 1-631-938-8127

 45-1 Ramsey Road, Shirley, NY 11967, USA

UniProt ID

Q9D2Y4



(Tris-Glycine gel) Discontinuous SDS-PAGE (reduced) with 5% enrichment gel and 15% separation gel.

 Tel: 1-631-559-9269 1-516-512-3133

 Email: info@creative-biomart.com  Fax: 1-631-938-8127

 45-1 Ramsey Road, Shirley, NY 11967, USA