

Recombinant Human MLKL Protein (Met1-Leu263), N-His tagged

Cat. No. MLKL-4074H Lot. No. (See product label)

SPECIFICATION

Product Overview	Recombinant human MLKL (Met1-Leu263) fused with the N-His tag was expressed in E. coli.
Species	Human
Source	E.coli
ProteinLength	Met1-Leu263
Form	Lyophilized powder/frozen liquid
Molecular Mass	33.10 kDa
Purity	>90% as determined by SDS-PAGE.
Notes	For research use only.
Storage	Use a manual defrost freezer and avoid repeated freeze thaw cycles. Store at 2 to 8 centigrade for one week. Store at -20 to -80 centigrade for twelve months from the date of receipt.
Storage Buffer	0.01M PBS, pH 7.4, 0.02% NLS
Reconstitution	Reconstitute in sterile water for a stock solution.

 Tel: 1-631-559-9269 1-516-512-3133

 Email: info@creative-biomart.com  Fax: 1-631-938-8127

 45-1 Ramsey Road, Shirley, NY 11967, USA

Shipping

They are shipped out with dry ice/blue ice unless customers require otherwise.

GENE INFORMATION
Gene Name

MLKL mixed lineage kinase domain-like [Homo sapiens (human)]

Official Symbol

MLKL

Synonyms

MLKL; mixed lineage kinase domain-like; mixed lineage kinase domain-like protein; FLJ34389;

Gene ID

197259

mRNA Refseq

NM_001142497

Protein Refseq

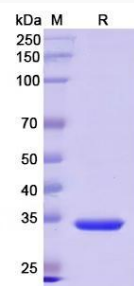
NP_001135969

MIM

615153

UniProt ID

Q8NB16

SDS-PAGE


 Tel: 1-631-559-9269 1-516-512-3133

 Email: info@creative-biomart.com  Fax: 1-631-938-8127

 45-1 Ramsey Road, Shirley, NY 11967, USA