

Recombinant Human MLLT4, Ras-binding Domain

Cat. No. MLLT4-1011H Lot. No. (See product label)

SPECIFICATION

Species Human

Source E.coli

Description

The amino terminus of Af6 was identified as the Rasbinding site. Additionally to the Ras-binding Af6 also binds Rap. ZO-1, a protein involved in the formation of tight junctions, also binds to Af6 close to the amino terminus thereby competing with Ras binding. These data suggest a participation of Af6 in the regulation of cell-cell contacts via a Ras-modulated interaction with ZO-1. In contrast to the well characterized effectors Raf, RaIGEF, and PI(3)kinase, Af6 is a protein with no enzymatic function. It seems to serve as a scaffolding component for protein complexes. This would represent a new type of Ras effector because Ras binding in this case does not lead to the activation of the enzymatic activity of the effector.

Form Liquid. Supplied in 25 mM HEPES pH 7.5, 50 mM NaCl, 1 mM EDTA and 50% glycerol.

Purity > 95% by SDS-PAGE.

Usage For in vitro use only.

Storage Quality guaranteed for 12 months store at -20°C. Avoid freeze / thaw cycles.

GENE INFORMATION

 Tel: 1-631-559-9269 1-516-512-3133

 Email: info@creative-biomart.com  Fax: 1-631-938-8127

 45-1 Ramsey Road, Shirley, NY 11967, USA

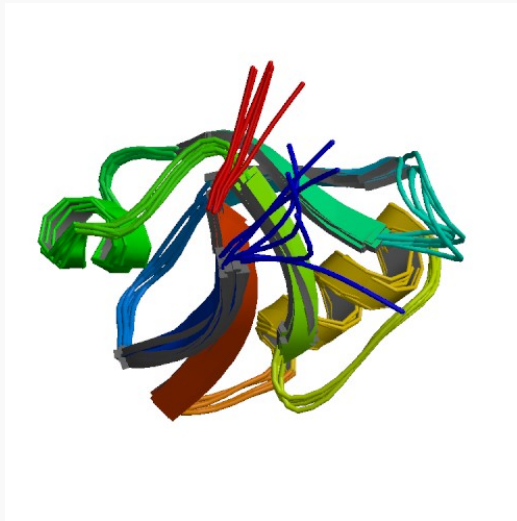
Gene Name	MLLT4 myeloid/lymphoid or mixed-lineage leukemia (trithorax homolog, Drosophila); translocated to, 4 [Homo sapiens]
Synonyms	MLLT4; myeloid/lymphoid or mixed-lineage leukemia (trithorax homolog, Drosophila); translocated to, 4; AF6; AF-6; AFADIN; FLJ34371; RP3-431P23.3; myeloid/lymphoid or mixed-lineage leukemia, translocated to, 4; Afadin; Protein AF-6; OTTHUMP00000017632; myeloid/lymphoid or mixed-lineage leukemia (trithorax(Drosophila) homolog); translocated to, 4
Gene ID	4301
mRNA Refseq	NM_001040000
Protein Refseq	NP_001035089
MIM	159559
UniProt ID	P55196
Chromosome Location	6q27
Pathway	Adherens junction; Leukocyte transendothelial migration; Tight junction
Function	protein C-terminus binding

 Tel: 1-631-559-9269 1-516-512-3133

 Email: info@creative-biomart.com  Fax: 1-631-938-8127

 45-1 Ramsey Road, Shirley, NY 11967, USA

PDB rendering based
on 1t2m.



 Tel: 1-631-559-9269 1-516-512-3133

 Email: info@creative-biomart.com  Fax: 1-631-938-8127

 45-1 Ramsey Road, Shirley, NY 11967, USA