

Recombinant Human MLPH Protein, GST-tagged

Cat. No. MLPH-5395H Lot. No. (See product label)

SPECIFICATION

Product Overview	Human MLPH full-length ORF (NP_077006.1, 1 a.a. - 600 a.a.) recombinant protein with GST-tag at N-terminal.
Species	Human
Source	Wheat Germ
Description	<p>This gene encodes a member of the exophilin subfamily of Rab effector proteins. The protein forms a ternary complex with the small Ras-related GTPase Rab27A in its GTP-bound form and the motor protein myosin Va. A similar protein complex in mouse functions to tether pigment-producing organelles called melanosomes to the actin cytoskeleton in melanocytes, and is required for visible pigmentation in the hair and skin. A mutation in this gene results in Griscelli syndrome type 3, which is characterized by a silver-gray hair color and abnormal pigment distribution in the hair shaft. Several alternatively spliced transcript variants of this gene have been described, but the full-length nature of some of these variants has not been determined. [provided by RefSeq]</p>
Molecular Mass	92.3 kDa
AA Sequence	<p>MGKKLDLSKLTDEEAQHVLVQVQDFDLRRKEEERLEALKGKIKKESKRELLSDTA HLNETHCARCLQPYQLLVNSKRQCLEGLFTCKSCGRVHPEEQGWICDPCHLARV VKIGSLEWYYEHVKARFKRFGSAKVIKSLHGRLLQGGAGPELISEERSGDSDQDDED GEPGSEAQAQAQPFQSKKKRLLSVHDFDFEGDSDSDSTQPQGHSLHLSSVPEARDS</p>

 Tel: 1-631-559-9269 1-516-512-3133

 Email: info@creative-biomart.com  Fax: 1-631-938-8127

 45-1 Ramsey Road, Shirley, NY 11967, USA

PQSLTDESCSEKAAPHKAEGLEEADTGASGCHSHPEEQPTSISPSRHGALAEICPP
 GGSHRMALGTAAALGNSVIRNEQLPLQYLADVDTSDEESIRAHVMASHHSKRRGRA
 SSESQIFELNKHISAVECLLTYLENTVVPPLAKGLGAGVRTEADVVEEALRRKLEELT
 SNVSDQETSSEEEEEAKDEKAEPNRDKSVGGLPQADPEVGTAAHQTNRQEKSPQDP
 GDPVQYNRTTDEELSELEDRVAVTASEVQQAEEVSDIESRIAALRAAGLTVKPSGK
 PRRKSNLPIFLPRVAGKLGKRPEDPNADPSSEAKAMAVPYLLRRKFSNSLKSQGKD
 DDSFDRKSVYRGSLTQRNPNARKGMASHTFAKPVVAHQ

Applications
 Antibody Production
 Functional Study
 Compound Screening

Notes
 Best use within three months from the date of receipt of this protein.

Storage
 Store at -80 centigrade. Aliquot to avoid repeated freezing and thawing.

Storage Buffer
 50 mM Tris-HCl, 10 mM reduced Glutathione, pH=8.0 in the elution buffer.

GENE INFORMATION

Gene Name
 MLPH melanophilin [Homo sapiens]

Official Symbol
 MLPH

Synonyms
 MLPH; melanophilin; exophilin 3; I(1) 3Rk; I1Rk3; In; Slac 2a; exophilin-3;
 synaptotagmin-like protein 2a; slp homolog lacking C2 domains a; SLAC2-A;
 MGC2771; MGC59733;

Gene ID
 79083

mRNA Refseq
 NM_001042467

 Tel: 1-631-559-9269 1-516-512-3133

 Email: info@creative-biomart.com  Fax: 1-631-938-8127

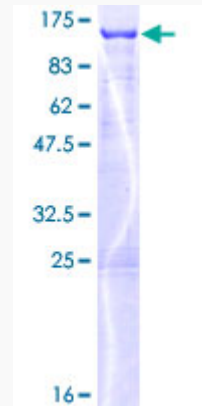
 45-1 Ramsey Road, Shirley, NY 11967, USA

Protein Refseq NP_001035932

MIM 606526

UniProt ID Q9BV36

**Quality Control
Testing:**



12.5% SDS-PAGE Stained with Coomassie Blue.

 Tel: 1-631-559-9269 1-516-512-3133

 Email: info@creative-biomart.com  Fax: 1-631-938-8127

 45-1 Ramsey Road, Shirley, NY 11967, USA