

Recombinant Human MLST8 Protein (Tyr68-Trp247), N-His tagged

Cat. No. MLST8-5091H Lot. No. (See product label)

SPECIFICATION

Product Overview	Recombinant human MLST8 (Tyr68-Trp247) fused with the N-His tag was expressed in E. coli.
Species	Human
Source	E.coli
ProteinLength	Tyr68-Trp247
Form	Lyophilized powder/frozen liquid
Molecular Mass	22.32 kDa
Purity	>90% as determined by SDS-PAGE.
Notes	For research use only.
Storage	Use a manual defrost freezer and avoid repeated freeze thaw cycles. Store at 2 to 8 centigrade for one week. Store at -20 to -80 centigrade for twelve months from the date of receipt.
Storage Buffer	0.01M PBS, pH 7.4, 0.02% NLS
Reconstitution	Reconstitute in sterile water for a stock solution.

 Tel: 1-631-559-9269 1-516-512-3133

 Email: info@creative-biomart.com  Fax: 1-631-938-8127

 45-1 Ramsey Road, Shirley, NY 11967, USA

Shipping

They are shipped out with dry ice/blue ice unless customers require otherwise.

GENE INFORMATION
Gene Name

MLST8 MTOR associated protein, LST8 homolog (*S. cerevisiae*) [*Homo sapiens* (human)]

Official Symbol

MLST8

Synonyms

MLST8; MTOR associated protein, LST8 homolog (*S. cerevisiae*); target of rapamycin complex subunit LST8; G protein beta subunit like; GbetaL; GBL; Lst8; Pop3; gable; protein GbetaL; TORC subunit LST8; mammalian lethal with SEC13 protein 8; LST8; POP3; WAT1; MGC111011;

Gene ID

64223

mRNA Refseq

NM_001199173

Protein Refseq

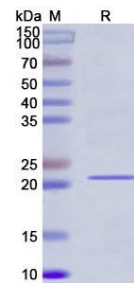
NP_001186102

MIM

612190

UniProt ID

Q9BVC4

SDS-PAGE


Tel: 1-631-559-9269 1-516-512-3133

Email: info@creative-biomart.com Fax: 1-631-938-8127

45-1 Ramsey Road, Shirley, NY 11967, USA