

Recombinant Human MLST8 Protein, GST-tagged

Cat. No. MLST8-5397H Lot. No. (See product label)

SPECIFICATION

Product Overview	Human MLST8 full-length ORF (NP_071767.3, 1 a.a. - 326 a.a.) recombinant protein with GST-tag at N-terminal.
Species	Human
Source	Wheat Germ
Description	MLST8 (MTOR Associated Protein, LST8 Homolog) is a Protein Coding gene. Diseases associated with MLST8 include Benign Familial Neonatal Epilepsy and Childhood Absence Epilepsy. Among its related pathways are CD28 co-stimulation and RET signaling.
Molecular Mass	62.3 kDa
AA Sequence	MNTSPGTVGSDPVILATAGYDHTVRFWQAHSGICTRTVQHQDSQVNALEVTPDRS MIAAAGYQHIRMIDLNSNNPNPIISYDGVNKNIASVGFHEDGRWMYTGGEDCTARI WDLRSRNLQCQRIFQVNAPINCVLHPNQAELIVGDQSGAIHIWDLKTDHNEQLIPEP EVSITSAHIDPDASYMAAVNSTGNCYVWNLTTGGIGDEVTLQIPKTKIPAHTRYALQCR FSPDSTLLATCSADQTCKIWRTSNFSMLTELSIKSGNPGESSRGWMWGCAFSGDS QYIVTASSDNLARLWCVETGEIKREYGGHQKAVVCLAFNDSVLG
Applications	Antibody Production Functional Study Compound Screening

 Tel: 1-631-559-9269 1-516-512-3133

 Email: info@creative-biomart.com  Fax: 1-631-938-8127

 45-1 Ramsey Road, Shirley, NY 11967, USA

Notes	Best use within three months from the date of receipt of this protein.
Storage	Store at -80 centigrade. Aliquot to avoid repeated freezing and thawing.
Storage Buffer	50 mM Tris-HCl, 10 mM reduced Glutathione, pH=8.0 in the elution buffer.
GENE INFORMATION	
Gene Name	MLST8 MTOR associated protein, LST8 homolog (<i>S. cerevisiae</i>) [<i>Homo sapiens</i>]
Official Symbol	MLST8
Synonyms	MLST8; MTOR associated protein, LST8 homolog (<i>S. cerevisiae</i>); target of rapamycin complex subunit LST8; G protein beta subunit like; GbetaL; GBL; Lst8; Pop3; gable; protein GbetaL; TORC subunit LST8; mammalian lethal with SEC13 protein 8; LST8; POP3; WAT1; MGC111011;
Gene ID	64223
mRNA Refseq	NM_001199173
Protein Refseq	NP_001186102
MIM	612190
UniProt ID	Q9BVC4

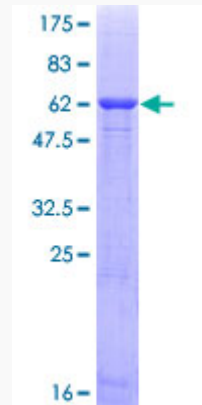
 Tel: 1-631-559-9269 1-516-512-3133

 Email: info@creative-biomart.com  Fax: 1-631-938-8127

 45-1 Ramsey Road, Shirley, NY 11967, USA

Quality Control

Testing:



12.5% SDS-PAGE Stained with Coomassie Blue.

 Tel: 1-631-559-9269 1-516-512-3133

 Email: info@creative-biomart.com  Fax: 1-631-938-8127

 45-1 Ramsey Road, Shirley, NY 11967, USA