

Recombinant Human MMAA Protein, Myc/DDK-tagged, C13 and N15-labeled

Cat. No. MMAA-2148H Lot. No. (See product label)

SPECIFICATION

Product Overview	MMAA MS Standard C13 and N15-labeled recombinant protein (NP_758454) with a C-terminal MYC/DDK tag, was expressed in HEK293 cells.
Species	Human
Source	HEK293
Description	The protein encoded by this gene is involved in the translocation of cobalamin into the mitochondrion, where it is used in the final steps of adenosylcobalamin synthesis. Adenosylcobalamin is a coenzyme required for the activity of methylmalonyl-CoA mutase. Defects in this gene are a cause of methylmalonic aciduria.
Molecular Mass	39 kDa
AA Sequence	MPMLLPHPHQHFLKGLLRAPFRCYHFIFHSSTHLGSGIPCAQPFNSLGLHCTKWMLL SDGLKRKLCVQTTLKDHTTEGLSDKEQRFVDKLYTGLIQGQRACLAEAITLVESTHSR KKELAQVLLQKVLLYHREQEQSNGKPLAFRVGLSGPPGAGKSTFIEYFGKMLTER GHKLSVLAVDPSSCTSGGSLLGDKTRMTELSRDMNAYIRPSPTRGTLGGVTRTTNE AILLCEGAGYDIILIVTVGVGQSEFAVADMVDMFVLLLPPAGGDELQGIKRGIIEMADL VAVTKSDGDLIVPARRIQAEYVSALKLLRKRQVWPKVIRISARSGEGISEMWDKM KDFQDLMLASGELTAKRRKQKQVMMWNLIQESVLEHFRTHPTVREQIPLLEQKVLIG ALSPGLAADFLLKAFKSRDTRTRPLEQKLISEEDLAANDILDYKDDDDKV
Purity	> 80% as determined by SDS-PAGE and Coomassie blue staining

 Tel: 1-631-559-9269 1-516-512-3133

 Email: info@creative-biomart.com  Fax: 1-631-938-8127

 45-1 Ramsey Road, Shirley, NY 11967, USA

Stability	Stable for 3 months from receipt of products under proper storage and handling conditions.
Storage	Store at -80 centigrade. Avoid repeated freeze-thaw cycles.
Concentration	50 µg/mL as determined by BCA
Storage Buffer	100 mM glycine, 25 mM Tris-HCl, pH 7.3.

GENE INFORMATION

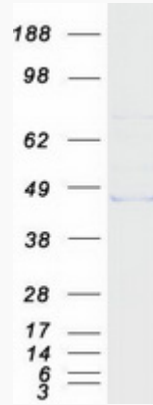
Gene Name	MMAA metabolism of cobalamin associated A [Homo sapiens (human)]
Official Symbol	MMAA
Synonyms	MMAA; methylmalonic aciduria (cobalamin deficiency) cblA type; methylmalonic aciduria (cobalamin deficiency) type A; methylmalonic aciduria type A protein, mitochondrial; cblA; MGC120010; MGC120011; MGC120012; MGC120013;
Gene ID	166785
mRNA Refseq	NM_172250
Protein Refseq	NP_758454
MIM	607481
UniProt ID	Q8IVH4

 Tel: 1-631-559-9269 1-516-512-3133

 Email: info@creative-biomart.com  Fax: 1-631-938-8127

 45-1 Ramsey Road, Shirley, NY 11967, USA

SDS-PAGE



 Tel: 1-631-559-9269 1-516-512-3133

 Email: info@creative-biomart.com  Fax: 1-631-938-8127

 45-1 Ramsey Road, Shirley, NY 11967, USA