

Recombinant Human MMAA Protein, GST-tagged

Cat. No. MMAA-5403H Lot. No. (See product label)

SPECIFICATION

Product Overview	Human MMAA full-length ORF (NP_758454.1, 1 a.a. - 418 a.a.) recombinant protein with GST-tag at N-terminal.
Species	Human
Source	Wheat Germ
Description	The protein encoded by this gene is involved in the translocation of cobalamin into the mitochondrion, where it is used in the final steps of adenosylcobalamin synthesis. Adenosylcobalamin is a coenzyme required for the activity of methylmalonyl-CoA mutase. Defects in this gene are a cause of methylmalonic aciduria. [provided by RefSeq]
Molecular Mass	72.9 kDa
AA Sequence	MPMLLPHPHQHFLKGLLRAPFRCYHFIFHSSTHLGSGIPCAQPFNSLGLHCTKWMLL SDGLKRKLCVQTTLKDHTEGLSDKERFVDKLYTGLIQGQRACLAEAITLVESTHSR KKELAQVLLQKVLLYHREQEQSNKGKPLAFRVGLSGPPGAGKSTFIEYFGKMLTER GHKLSVLAVDPSSCTSGGSLLDGKTRMTELSRDMNAYIRPSPTRGTLGGVTRTTNE AILLCEGAGYDIILIVTVGVGQSEFAVADMVDMFVLLPPAGGDELQGIKRGIIEMADL VAVTKSDGDLIVPARRIQAEYVSALKLLRKRKRSQVWPKVIRISARSGEGISEMWDKM KDFQDLMLASGELTAKRRKQKQVMMWNLIQESVLEHFRTHPTVREQIPLLEQKVLIG ALSPGLAADFLLKAFKSRD
Applications	Antibody Production

 Tel: 1-631-559-9269 1-516-512-3133

 Email: info@creative-biomart.com  Fax: 1-631-938-8127

 45-1 Ramsey Road, Shirley, NY 11967, USA

	Functional Study Compound Screening
Notes	Best use within three months from the date of receipt of this protein.
Storage	Store at -80 centigrade. Aliquot to avoid repeated freezing and thawing.
Storage Buffer	50 mM Tris-HCl, 10 mM reduced Glutathione, pH=8.0 in the elution buffer.
GENE INFORMATION	
Gene Name	MMAA methylmalonic aciduria (cobalamin deficiency) cblA type [Homo sapiens]
Official Symbol	MMAA
Synonyms	MMAA; methylmalonic aciduria (cobalamin deficiency) cblA type; methylmalonic aciduria (cobalamin deficiency) type A; methylmalonic aciduria type A protein, mitochondrial; cblA; MGC120010; MGC120011; MGC120012; MGC120013;
Gene ID	166785
mRNA Refseq	NM_172250
Protein Refseq	NP_758454
MIM	607481
UniProt ID	Q8IVH4

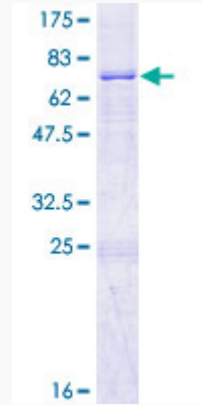
 Tel: 1-631-559-9269 1-516-512-3133

 Email: info@creative-biomart.com  Fax: 1-631-938-8127

 45-1 Ramsey Road, Shirley, NY 11967, USA

Quality Control

Testing:



12.5% SDS-PAGE Stained with Coomassie Blue.

 Tel: 1-631-559-9269 1-516-512-3133

 Email: info@creative-biomart.com  Fax: 1-631-938-8127

 45-1 Ramsey Road, Shirley, NY 11967, USA