

Recombinant Human MME Protein, MYC/DDK-tagged, C13 and N15-labeled

Cat. No. MME-133H **Lot. No.** (See product label)

SPECIFICATION

Product Overview	MME MS Standard C13 and N15-labeled recombinant protein (NP_000893) with a C-terminal MYC/DDK tag, was expressed in HEK293 cells.
Species	Human
Source	HEK293
Description	The protein encoded by this gene is a type II transmembrane glycoprotein and a common acute lymphocytic leukemia antigen that is an important cell surface marker in the diagnosis of human acute lymphocytic leukemia (ALL). The encoded protein is present on leukemic cells of pre-B phenotype, which represent 85% of cases of ALL. This protein is not restricted to leukemic cells, however, and is found on a variety of normal tissues. The protein is a neutral endopeptidase that cleaves peptides at the amino side of hydrophobic residues and inactivates several peptide hormones including glucagon, enkephalins, substance P, neurotensin, oxytocin, and bradykinin.
Molecular Mass	85.3 kDa
AA Sequence	MGKSESQMDITDINTPKPKKKQRWTPLEISLSVLVLLLTIIAVTMIALYATYDDGICKSS DCIKSAARLIQNMDATTEPCTDFFKYACGGWLKRNVIPETSSRYGNFDILRDELEVVL KDLVQEPKTEDIVAVQKAKALYRSCINESAIDSRGGEPLLKLLPDIYGWPVATENWE QKYGASWTAEKAIQAQLNSKYGKKVLINLFGVTDDKNSVNHVIHIDQPRGLGPSRDYY ECTGIYKEACTAYVDFMISVARLIRQEERLPIDENQLALEMNKVMLEKEIANATAKPE

 Tel: 1-631-559-9269 1-516-512-3133

 Email: info@creative-biomart.com  Fax: 1-631-938-8127

 45-1 Ramsey Road, Shirley, NY 11967, USA



DRNDPMLLYNKMTLAQIQNNFSLEINGKPFWSWLNFTNEIMSTVNIISITNEEDVVVYAP
 EYLTKLPILTKYSARDLQNLMSWRFIMDLVSSLSRITYKESRNAFRKALYGTSETAT
 WRRCANVYVNGNMENAVGRLYVEAAFAGESKHVVEDLIAQIREVFIQTLDDLTWMDA
 ETKKRAEEKALAIKERIGYPDDIVSNDNKLNNEYLELNYKEDEYFENIIQNLKFSQSKQ
 LKKLREKVDKDEWISGAAVVNAFYSSGRNQIVFPAGILQPPFFSAQQSNSLNYGGIG
 MVIGHEITHGFDDNGRNFNKDGDLDVDDWWTQQSASNFKESQCMVYQYGNFSWDL
 AGGQHLNGINTLGENIADNGGLGQAYRAYQNYIKKNGEEKLLPGLDLNHHKQLFFLN
 AQVWCGTYRPEYAVNSIKTDVHSPGNFRIIGTLQNSAEFSEAFHCRKNSYMNPEKK
 CRVWTRTRPLEQKLISEEDLAANDILDYKDDDDKV

Purity	> 80% as determined by SDS-PAGE and Coomassie blue staining
Stability	Stable for 3 months from receipt of products under proper storage and handling conditions.
Storage	Store at -80 centigrade. Avoid repeated freeze-thaw cycles.
Concentration	50 µg/mL as determined by BCA
Storage Buffer	100 mM glycine, 25 mM Tris-HCl, pH 7.3.

GENE INFORMATION

Gene Name	MME membrane metalloendopeptidase [Homo sapiens (human)]
Official Symbol	MME
Synonyms	MME; membrane metalloendopeptidase; CALLA; CD10; CMT2T; NEP; SCA43; SFE; neprilysin; atriopeptidase; common acute lymphocytic leukemia antigen; membrane metallo-endopeptidase (neutral endopeptidase, enkephalinase, CALLA, CD10); membrane metallo-endopeptidase variant 1; membrane metallo-endopeptidase

variant 2; neprilysin-390; neprilysin-411; neutral endopeptidase 24.11; skin fibroblast elastase; NP_000893.2; EC 3.4.24.11

Gene ID 4311

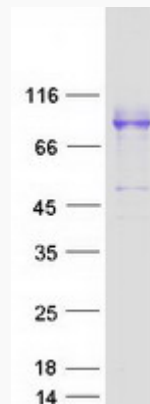
mRNA Refseq NM_000902

Protein Refseq NP_000893

MIM 120520

UniProt ID P08473

SDS-PAGE



 Tel: 1-631-559-9269 1-516-512-3133

 Email: info@creative-biomart.com  Fax: 1-631-938-8127

 45-1 Ramsey Road, Shirley, NY 11967, USA