

Recombinant Human MME protein, His-tagged

Cat. No. MME-1807H Lot. No. (See product label)

SPECIFICATION

Product Overview	Recombinant Human MME protein(P08473)(Tyr52-Trp750), fused with N-terminal His tag, was expressed in HEK293.
Species	Human
Source	HEK293
ProteinLength	Tyr52-Trp750
Tag	N-His
Form	Supplied as 0.22µm filtered solution in 50mM MES, 100mM NaCl, 1mM ZnCl ₂ , 10% glycerol (pH 6.5).
Bio-activity	Measured by its ability to cleave the fluorogenic peptide substrate, Mca-RPPGFSAFK (Dnp) -OH. The specific activity is > 1500 pmoles/min/ug.
Molecular Mass	The protein has a predicted MW of 80.9 kDa. Due to glycosylation, the protein migrates to 81-110 kDa based on Tris-Bis PAGE result.
Endotoxin	Less than 1EU per µg by the LAL method.
Purity	> 95% as determined by Tris-Bis PAGE;> 95% as determined by HPLC
Storage	Valid for 12 months from date of receipt when stored at -80°C. Recommend to aliquot

 Tel: 1-631-559-9269 1-516-512-3133

 Email: info@creative-biomart.com  Fax: 1-631-938-8127

 45-1 Ramsey Road, Shirley, NY 11967, USA

the protein into smaller quantities for optimal storage. Please do not repeated freeze-thaw cycles.

Reconstitution

It is recommended that sterile water be added to the vial to prepare a stock solution of 0.2 ug/ul. Centrifuge the vial at 4°C before opening to recover the entire contents.

GENE INFORMATION

Gene Name

MME membrane metallo-endopeptidase [Homo sapiens]

Official Symbol

MME

Synonyms

MME; membrane metallo-endopeptidase; neprilysin; CALLA; CD10; enkephalinase; NEP; neutral endopeptidase; atriopeptidase; skin fibroblast elastase; neutral endopeptidase 24.11; membrane metallo-endopeptidase variant 1; membrane metallo-endopeptidase variant 2; common acute lymphocytic leukemia antigen; membrane metallo-endopeptidase (neutral endopeptidase, enkephalinase); membrane metallo-endopeptidase (neutral endopeptidase, enkephalinase, CALLA, CD10); SFE; MGC126681; MGC126707; DKFZp686O16152;

Gene ID

4311

mRNA Refseq

NM_000902

Protein Refseq

NP_000893

MIM

120520

UniProt ID

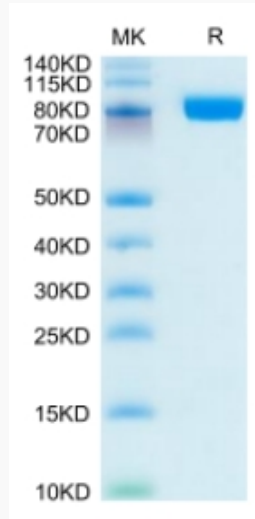
P08473

 Tel: 1-631-559-9269 1-516-512-3133

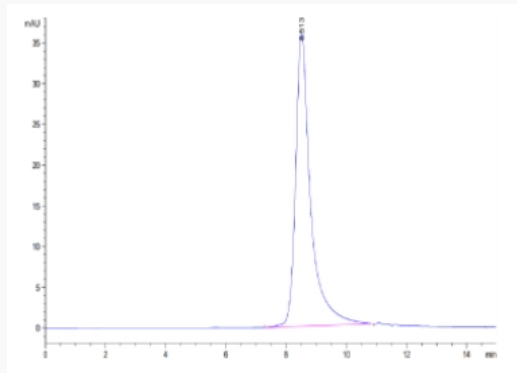
 Email: info@creative-biomart.com  Fax: 1-631-938-8127

 45-1 Ramsey Road, Shirley, NY 11967, USA

Tris-Bis PAGE



SEC-HPLC



 Tel: 1-631-559-9269 1-516-512-3133

 Email: info@creative-biomart.com  Fax: 1-631-938-8127

 45-1 Ramsey Road, Shirley, NY 11967, USA