

Active Recombinant Human MME protein, hFc-tagged

Cat. No. MME-264H Lot. No. (See product label)

SPECIFICATION

Product Overview	Active Recombinant Human MME protein(Tyr 52-Trp 750)(NP_000893.2) was expressed in HEK293, fused with the Fc region of human IgG1 at the N-terminus.
Species	Human
Source	HEK293
ProteinLength	52-750 aa
Form	Lyophilized from sterile 100mM Glycine, 10mM NaCl, 50mM Tris, pH 7.5.
Bio-activity	Measured by its ability to cleave the fluorogenic peptide substrate, Mca-RPPGFSAFK(Dnp)-OH. The specific activity is >1000 pmoles/min/μg.
Molecular Mass	The recombinant human MME/Fc is a disulfide-linked homodimeric protein. The reduced monomer consists of 936 amino acids and predicts a molecular mass of 106 kDa. As a result of glycosylation, the rh Fc monomer migrates as approximately 120-130 kDa band in SDS-PAGE under reducing conditions.
Endotoxin	< 1.0 EU per μg of the protein as determined by the LAL method.
Purity	> 95 % as determined by SDS-PAGE
Storage	Store it under sterile conditions at -20°C to -80°C upon receiving. Recommend to aliquot the protein into smaller quantities for optimal storage. Avoid repeated freeze-

 Tel: 1-631-559-9269 1-516-512-3133

 Email: info@creative-biomart.com  Fax: 1-631-938-8127

 45-1 Ramsey Road, Shirley, NY 11967, USA

thaw cycles.

Reconstitution

It is recommended that sterile water be added to the vial to prepare a stock solution of 0.2 ug/ul. Centrifuge the vial at 4°C before opening to recover the entire contents.

GENE INFORMATION

Gene Name

MME membrane metallo-endopeptidase [Homo sapiens]

Official Symbol

MME

Synonyms

MME; membrane metallo-endopeptidase; neprilysin; CALLA; CD10; enkephalinase; NEP; neutral endopeptidase; atriopeptidase; skin fibroblast elastase; neutral endopeptidase 24.11; membrane metallo-endopeptidase variant 1; membrane metallo-endopeptidase variant 2; common acute lymphocytic leukemia antigen; membrane metallo-endopeptidase (neutral endopeptidase, enkephalinase); membrane metallo-endopeptidase (neutral endopeptidase, enkephalinase, CALLA, CD10); SFE; MGC126681; MGC126707; DKFZp686O16152;

Gene ID

4311

mRNA Refseq

NM_000902

Protein Refseq

NP_000893

MIM

120520

UniProt ID

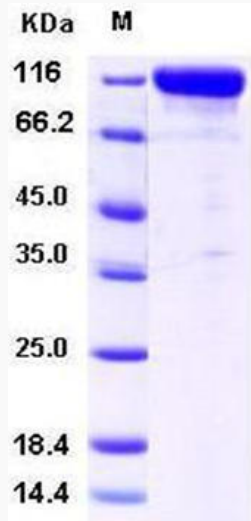
P08473

 Tel: 1-631-559-9269 1-516-512-3133

 Email: info@creative-biomart.com  Fax: 1-631-938-8127

 45-1 Ramsey Road, Shirley, NY 11967, USA

SDS-PAGE



 Tel: 1-631-559-9269 1-516-512-3133

 Email: info@creative-biomart.com  Fax: 1-631-938-8127

 45-1 Ramsey Road, Shirley, NY 11967, USA