

## Recombinant Human MME protein

Cat. No. MME-265H Lot. No. (See product label)

### SPECIFICATION

**Product Overview** Recombinant Human MME (Tyr52-Trp750) protein carried no tag and was expressed in human 293 cells (HEK293).

**Species** Human

**Source** HEK293

**ProteinLength** Tyr52-Trp750

**Description** Cluster of differentiation 10 (CD10) is also known as membrane metallo-endopeptidase, neutral endopeptidase (NEP), Neprilysin, and common acute lymphoblastic leukemia antigen (CALLA), is a 90-110-kDa type II transmembrane glycoprotein normally expressed by a variety of tissues, including epithelial cells of the prostate, kidney, intestine, endometrium, adrenal glands, and lung. This zinc-dependent metalloprotease enzyme cleaves peptide bonds on the amino side of hydrophobic residues and inactivates a variety of physiologically active secreted peptides. CD20 is thought to be the rate-limiting degrading enzyme of amyloid  $\beta$  peptide ( $A\beta$ ) whose abnormal misfolding and aggregation in neural tissue has been implicated in the development of Alzheimer's disease (AD). CD10 is also identified as the common acute lymphoblastic leukemia antigen (CALLA) present on leukemic cells of pre-B phenotype, and thus serves as the most important biomarker in the diagnosis of human acute lymphocytic leukemia (ALL).

**Predicted N Terminal** Tyr52

 Tel: 1-631-559-9269 1-516-512-3133

 Email: [info@creative-biomart.com](mailto:info@creative-biomart.com)  Fax: 1-631-938-8127

 45-1 Ramsey Road, Shirley, NY 11967, USA

<b>Form</b>	Lyophilized from 0.22 µm filtered solution in 20 mM Tris, 100 mM NaCl, pH8.0 , 10% trehalose.
<b>Molecular Mass</b>	The protein has a calculated MW of 80.0 kDa. The protein migrates as 80-100 kDa under reducing (R) condition (SDS-PAGE) due to glycosylation.
<b>Endotoxin</b>	Less than 1.0 EU per µg by the LAL method.
<b>Purity</b>	>95% as determined by SDS-PAGE.
<b>Storage</b>	<p>For long term storage, the product should be stored at lyophilized state at -20 centigrade or lower.</p> <p>Please avoid repeated freeze-thaw cycles.</p> <p>This product is stable after storage at:</p> <p>-20 to -70 centigrade for 12 months in lyophilized state;</p> <p>-70 centigrade for 3 months under sterile conditions after reconstitution.</p>
<b>Reconstitution</b>	It is recommended that sterile water be added to the vial to prepare a stock solution of 0.2 ug/ul. Centrifuge the vial at 4°C before opening to recover the entire contents.

## GENE INFORMATION

<b>Gene Name</b>	MME
<b>Official Symbol</b>	MME
<b>Synonyms</b>	MME; membrane metallo-endopeptidase; neprilysin; CALLA; CD10; enkephalinase; NEP; neutral endopeptidase; atriopeptidase; skin fibroblast elastase; neutral endopeptidase 24.11; membrane metallo-endopeptidase variant 1; membrane metallo-endopeptidase variant 2; common acute lymphocytic leukemia antigen; membrane metallo-endopeptidase (neutral endopeptidase, enkephalinase);

 Tel: 1-631-559-9269 1-516-512-3133

 Email: [info@creative-biomart.com](mailto:info@creative-biomart.com)  Fax: 1-631-938-8127

 45-1 Ramsey Road, Shirley, NY 11967, USA

membrane metallo-endoropeptidase (neutral endopeptidase, enkephalinase, CALLA, CD10); SFE; MGC126681; MGC126707; DKFZp686O16152

**Gene ID** 4311

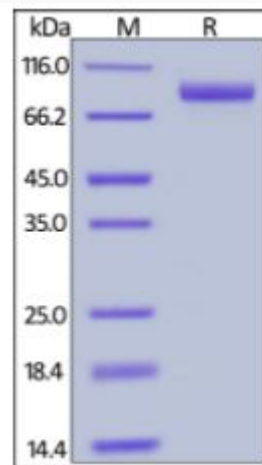
**mRNA Refseq** NM\_000902

**Protein Refseq** NP\_000893

**MIM** 120520

**UniProt ID** P08473

**SDS-PAGE of MME-265H**



Human Neprilysin, Tag Free on SDS-PAGE under reducing (R) condition. The gel was stained overnight with Coomassie Blue. The purity of the protein is greater than 95%.

 Tel: 1-631-559-9269 1-516-512-3133

 Email: [info@creative-biomart.com](mailto:info@creative-biomart.com)  Fax: 1-631-938-8127

 45-1 Ramsey Road, Shirley, NY 11967, USA