

Recombinant Human MME Protein (Tyr52-Trp750), N-His tagged

Cat. No. MME-4559H Lot. No. (See product label)

SPECIFICATION

| | |
|-------------------------|---|
| Product Overview | Recombinant human MME (Tyr52-Trp750) fused with the N-terminal His tag was expressed in Mammalian cells. |
| Species | Human |
| Source | Mammalian Cells |
| ProteinLength | Tyr52-Trp750 |
| Form | Lyophilized powder/frozen liquid |
| Molecular Mass | 76.89 kDa |
| Endotoxin | < 1.0 EU/μg of the protein as determined by the LAL method. |
| Purity | >90% as determined by SDS-PAGE. |
| Notes | For research use only. |
| Storage | Use a manual defrost freezer and avoid repeated freeze thaw cycles. Store at 2 to 8 centigrade for one week. Store at -20 to -80 centigrade for twelve months from the date of receipt. |
| Storage Buffer | Supplied as solution form in PBS or lyophilized from PBS. |

 Tel: 1-631-559-9269 1-516-512-3133

 Email: info@creative-biomart.com  Fax: 1-631-938-8127

 45-1 Ramsey Road, Shirley, NY 11967, USA

| | |
|-------------------------|--|
| Reconstitution | Reconstitute in sterile water for a stock solution. |
| Shipping | They are shipped out with dry ice/blue ice unless customers require otherwise. |
| GENE INFORMATION | |
| Gene Name | MME membrane metallo-endopeptidase [Homo sapiens (human)] |
| Official Symbol | MME |
| Synonyms | MME; membrane metallo-endopeptidase; neprilysin; CALLA; CD10; enkephalinase; NEP; neutral endopeptidase; atriopeptidase; skin fibroblast elastase; neutral endopeptidase 24.11; membrane metallo-endopeptidase variant 1; membrane metallo-endopeptidase variant 2; common acute lymphocytic leukemia antigen; membrane metallo-endopeptidase (neutral endopeptidase, enkephalinase); membrane metallo-endopeptidase (neutral endopeptidase, enkephalinase, CALLA, CD10); SFE; MGC126681; MGC126707; DKFZp686O16152; |
| Gene ID | 4311 |
| mRNA Refseq | NM_000902 |
| Protein Refseq | NP_000893 |
| MIM | 120520 |
| UniProt ID | P08473 |

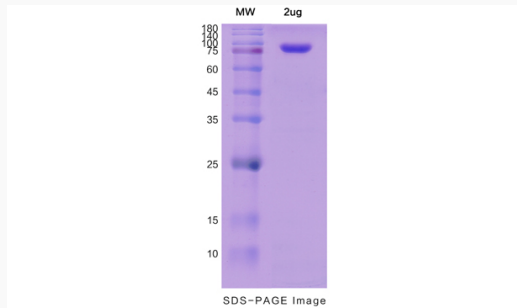
 Tel: 1-631-559-9269 1-516-512-3133

 Email: info@creative-biomart.com  Fax: 1-631-938-8127

 45-1 Ramsey Road, Shirley, NY 11967, USA



SDS-PAGE



Tel: 1-631-559-9269 1-516-512-3133

Email: info@creative-biomart.com Fax: 1-631-938-8127

45-1 Ramsey Road, Shirley, NY 11967, USA