

Recombinant Human MME Protein, GST-tagged

Cat. No. MME-5409H Lot. No. (See product label)

SPECIFICATION

| | |
|-------------------------|--|
| Product Overview | Human MME full-length ORF (AAI01659.1, 1 a.a. - 750 a.a.) recombinant protein with GST-tag at N-terminal. |
| Species | Human |
| Source | Wheat Germ |
| Description | <p>This gene encodes a common acute lymphocytic leukemia antigen that is an important cell surface marker in the diagnosis of human acute lymphocytic leukemia (ALL). This protein is present on leukemic cells of pre-B phenotype, which represent 85% of cases of ALL. This protein is not restricted to leukemic cells, however, and is found on a variety of normal tissues. It is a glycoprotein that is particularly abundant in kidney, where it is present on the brush border of proximal tubules and on glomerular epithelium. The protein is a neutral endopeptidase that cleaves peptides at the amino side of hydrophobic residues and inactivates several peptide hormones including glucagon, enkephalins, substance P, neurotensin, oxytocin, and bradykinin. This gene, which encodes a 100-kD type II transmembrane glycoprotein, exists in a single copy of greater than 45 kb. The 5 untranslated region of this gene is alternatively spliced, resulting in four separate mRNA transcripts. The coding region is not affected by alternative splicing. [provided by RefSeq]</p> |
| Molecular Mass | 111.9 kDa |
| AA Sequence | MGKSESQMDITDINTPKPKKKQRWTPLEISLSVLVLLLTIIAVTMIALYATYDDGICKSS |

 Tel: 1-631-559-9269 1-516-512-3133

 Email: info@creative-biomart.com  Fax: 1-631-938-8127

 45-1 Ramsey Road, Shirley, NY 11967, USA

DCIKSAARLIQNMDATTEPCTDFFKYACGGWLKRNVIPETSSRYGNFDILRDELEVVL
 KDVLQEPKTEDIVAVQKAKALYRSCINESAIDSRGGPELLKLLPDIYGWPVATENWE
 QKYGASWTAEKAIQAQLNSKYGKKVLINLFGVGTDDKNSVNHVIHIDQPRLGLPSRDYY
 ECTGIYKEACTAYVDFMISVARLIRQEERLPIDENQLALEMNKVMEMEKEIANATAKPE
 DRNDPMLLYNKMTLAQIQNNFSLEINGKPFWSLNFNEIMSTVNI SITNEEDVVVYAP
 EYLTKLKPILTKYSARDLQNLMSWRFIMDLVSSLSRITYKESRNAFRKALYGTSETAT
 WRRCANVYVNGNMENAVGRLYVEAAFAGESKHVVEDLIAQIREVFIQTLDDLTWMDA
 ETKKRAEEKALAIKERIGYPDDIVSNDNKLNNEYLELNYKEDEYFENIIQNLKFSQSKQ
 LKKLREKVDKDEWISGAAVVNAFYSSGRNQIVFPAGILQPPFFSAQQSNSLNYGGIG
 MVIGHEITHGFDDNGRNFNKDGLVDWWTQQSASNFKESQCMVYQYGNFNSWDL
 AGGQHLNGINTLGENIADNGGLGQAYRAYQNYIKKNGEEKLLPGLDLNHHKQLFFLNF
 AQVWCGTYRPEYAVNSIKTDVHSPGNFRIIGTLQNSAEFSEAFHCRKNSYMNPEKK
 CRVW

| | |
|---------------------|---|
| Applications | Enzyme-linked Immunoabsorbent Assay Western Blot (Recombinant protein) Antibody Production Protein Array |
|---------------------|---|

| | |
|--------------|--|
| Notes | Best use within three months from the date of receipt of this protein. |
|--------------|--|

| | |
|----------------|--|
| Storage | Store at -80 centigrade. Aliquot to avoid repeated freezing and thawing. |
|----------------|--|

| | |
|-----------------------|--|
| Storage Buffer | 50 mM Tris-HCl, 10 mM reduced Glutathione, pH=8.0 in the elution buffer. |
|-----------------------|--|

GENE INFORMATION

| | |
|------------------|---|
| Gene Name | MME membrane metallo-endopeptidase [Homo sapiens] |
|------------------|---|

| | |
|------------------------|-----|
| Official Symbol | MME |
|------------------------|-----|

 Tel: 1-631-559-9269 1-516-512-3133

 Email: info@creative-biomart.com  Fax: 1-631-938-8127

 45-1 Ramsey Road, Shirley, NY 11967, USA

Synonyms

MME; membrane metallo-endopeptidase; neprilysin; CALLA; CD10; enkephalinase; NEP; neutral endopeptidase; atriopeptidase; skin fibroblast elastase; neutral endopeptidase 24.11; membrane metallo-endopeptidase variant 1; membrane metallo-endopeptidase variant 2; common acute lymphocytic leukemia antigen; membrane metallo-endopeptidase (neutral endopeptidase, enkephalinase); membrane metallo-endopeptidase (neutral endopeptidase, enkephalinase, CALLA, CD10); SFE; MGC126681; MGC126707; DKFZp686O16152;

Gene ID

4311

mRNA Refseq

NM_000902

Protein Refseq

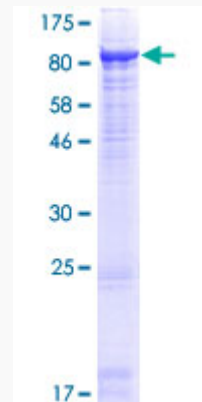
NP_000893

MIM

120520

UniProt ID


P08473

Quality Control
Testing:


12.5% SDS-PAGE Stained with Coomassie Blue.

 Tel: 1-631-559-9269 1-516-512-3133

 Email: info@creative-biomart.com  Fax: 1-631-938-8127

 45-1 Ramsey Road, Shirley, NY 11967, USA