

Recombinant Human MME protein, His-tagged

Cat. No. MME-5466H Lot. No. (See product label)

SPECIFICATION

Product Overview	Recombinant Human MME protein(P08473)(52-750aa), fused to N-terminal His tag, was expressed in Yeast.
Species	Human
Source	Yeast
ProteinLength	52-750aa
Form	If the delivery form is liquid, the default storage buffer is Tris/PBS-based buffer, 5%-50% glycerol. If the delivery form is lyophilized powder, the buffer before lyophilization is Tris/PBS-based buffer, 6% Trehalose, pH 8.0.
Molecular Mass	81.8 kDa
Purity	Greater than 90% as determined by SDS-PAGE.
Storage	Store at -20°C/-80°C upon receipt, aliquoting is necessary for mutiple use. Avoid repeated freeze-thaw cycles.
Reconstitution	Please reconstitute protein in deionized sterile water to a concentration of 0.1-1.0 mg/mL. We recommend to add 5-50% of glycerol (final concentration) and aliquot for long-term storage at -20°C/-80°C. Our default final concentration of glycerol is 50%.

GENE INFORMATION

 Tel: 1-631-559-9269 1-516-512-3133

 Email: info@creative-biomart.com  Fax: 1-631-938-8127

 45-1 Ramsey Road, Shirley, NY 11967, USA



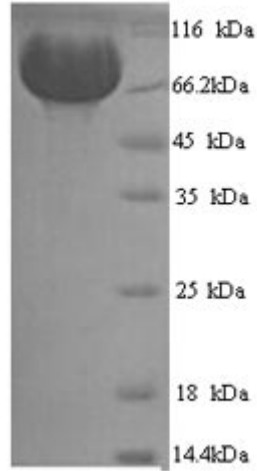
Gene Name	MME membrane metallo-endopeptidase [Homo sapiens]
Official Symbol	MME
Synonyms	MME; membrane metallo-endopeptidase; neprilysin; CALLA; CD10; enkephalinase; NEP; neutral endopeptidase; atriopeptidase; skin fibroblast elastase; neutral endopeptidase 24.11; membrane metallo-endopeptidase variant 1; membrane metallo-endopeptidase variant 2; common acute lymphocytic leukemia antigen; membrane metallo-endopeptidase (neutral endopeptidase, enkephalinase); membrane metallo-endopeptidase (neutral endopeptidase, enkephalinase, CALLA, CD10); SFE; MGC126681; MGC126707; DKFZp686O16152;
Gene ID	4311
mRNA Refseq	NM_000902
Protein Refseq	NP_000893
MIM	120520
UniProt ID	P08473

Tel: 1-631-559-9269 1-516-512-3133

Email: info@creative-biomart.com Fax: 1-631-938-8127

45-1 Ramsey Road, Shirley, NY 11967, USA

SDS-PAGE



 Tel: 1-631-559-9269 1-516-512-3133

 Email: info@creative-biomart.com  Fax: 1-631-938-8127

 45-1 Ramsey Road, Shirley, NY 11967, USA