

# Recombinant Human MME Protein, Myc/DDK-tagged, C13 and N15-labeled

**Cat. No.** MME-6249H    **Lot. No.** (See product label)

## SPECIFICATION

<b>Product Overview</b>	MME MS Standard C13 and N15-labeled recombinant protein (NP_009219) with a C-terminal MYC/DDK tag, was expressed in HEK293 cells.
<b>Species</b>	Human
<b>Source</b>	HEK293
<b>Description</b>	The protein encoded by this gene is a type II transmembrane glycoprotein and a common acute lymphocytic leukemia antigen that is an important cell surface marker in the diagnosis of human acute lymphocytic leukemia (ALL). The encoded protein is present on leukemic cells of pre-B phenotype, which represent 85% of cases of ALL. This protein is not restricted to leukemic cells, however, and is found on a variety of normal tissues. The protein is a neutral endopeptidase that cleaves peptides at the amino side of hydrophobic residues and inactivates several peptide hormones including glucagon, enkephalins, substance P, neurotensin, oxytocin, and bradykinin.
<b>Molecular Mass</b>	85.5 kDa
<b>AA Sequence</b>	MGKSESQMDITDINTPKPKKKQRWTPLEISLSVLVLLLTIIAVTMIALYATYDDGICKSS DCIKSAARLIQNMDATTEPCTDFFKYACGGWLKRNVIPETSSRYGNFDILRDELEVVL KDLVQEPKTEDIVAVQKAKALYRSCINESAIDSRGGEPLLKLLPDIYGWPVATENWE QKYGASWTAEKAIQAQLNSKYGKKVLINLFGVTDDKNSVNHVIHIDQPRGLGSPRDYY ECTGIYKEACTAYVDFMISVARLIRQEERLPIDENQLALEMNKVMLEKEIANATAKPE

 Tel: 1-631-559-9269    1-516-512-3133

 Email: [info@creative-biomart.com](mailto:info@creative-biomart.com)     Fax: 1-631-938-8127

 45-1 Ramsey Road, Shirley, NY 11967, USA

DRNDPMLLYNKMTLAQIQNNFSLEINGKPFWSWLNFTNEIMSTVNI SITNEEDVVVYAP  
 EYLTKLKPILTKYSARDLQNLMSWRFIMDLVSSLSRITYKESRNAFRKALYGTSETAT  
 WRRCANVYVNGNMENAVGRLYVEAAFAGESKHVVEDLIAQIREVFIQTLDDLTWMDA  
 ETKKRAEEKALAIKERIGYPDDIVSNDNKLNNEYLELNYKEDEYFENIIQNLKFSQSKQ  
 LKKLREKVDKDEWISGAAVVNAFYSSGRNQIVFPAGILQPPFFSAQQSNSLNYGGIG  
 MVIGHEITHGFDDNGRNFNKDGDLDVDDWWTQQSASNFKESQCMVYQYGNFSWDL  
 AGGQHLNGINTLGENIADNGGLGQAYRAYQNYIKKNGEEKLLPGLDLNHHKQLFFLN  
 AQVWCGTYRPEYAVNSIKTDVHSPGNFRIIGTLQNSAEFSEAFHCRKNSYMNPEKK  
 CRVWTRTRPLEQKLISEEDLAANDILDYKDDDDKV

**Purity** > 80% as determined by SDS-PAGE and Coomassie blue staining

**Stability** Stable for 3 months from receipt of products under proper storage and handling conditions.

**Storage** Store at -80 centigrade. Avoid repeated freeze-thaw cycles.

**Concentration** 50 µg/mL as determined by BCA

**Storage Buffer** 100 mM glycine, 25 mM Tris-HCl, pH 7.3.

## GENE INFORMATION

**Gene Name** MME membrane metallo-endopeptidase [ Homo sapiens (human) ]

**Official Symbol** MME

**Synonyms** MME; membrane metallo-endopeptidase; neprilysin; CALLA; CD10; enkephalinase; NEP; neutral endopeptidase; atriopetidase; skin fibroblast elastase; neutral endopeptidase 24.11; membrane metallo-endopeptidase variant 1; membrane metallo-endopeptidase variant 2; common acute lymphocytic leukemia antigen;

 Tel: 1-631-559-9269 1-516-512-3133

 Email: [info@creative-biomart.com](mailto:info@creative-biomart.com)  Fax: 1-631-938-8127

 45-1 Ramsey Road, Shirley, NY 11967, USA

membrane metallo-endopeptidase (neutral endopeptidase, enkephalinase);  
membrane metallo-endopeptidase (neutral endopeptidase, enkephalinase, CALLA,  
CD10); SFE; MGC126681; MGC126707; DKFZp686O16152;

**Gene ID** 4311

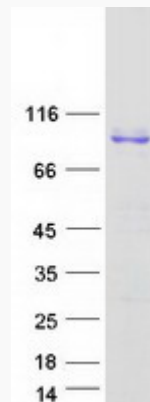
**mRNA Refseq** NM\_007288

**Protein Refseq** NP\_009219

**MIM** 120520

**UniProt ID** P08473

**SDS-PAGE**



 Tel: 1-631-559-9269 1-516-512-3133

 Email: [info@creative-biomart.com](mailto:info@creative-biomart.com)  Fax: 1-631-938-8127

 45-1 Ramsey Road, Shirley, NY 11967, USA