

Recombinant Full Length Human MMP1 Protein, His-tagged

Cat. No. MMP1-1114H Lot. No. (See product label)

SPECIFICATION

Product Overview	Recombinant Human MMP1 Protein (Phe20-Asn469) with His tag was expressed in CHO.
Species	Human
Source	CHO
ProteinLength	20-469 aa
Description	<p>This gene encodes a member of the peptidase M10 family of matrix metalloproteinases (MMPs). Proteins in this family are involved in the breakdown of extracellular matrix in normal physiological processes, such as embryonic development, reproduction, and tissue remodeling, as well as in disease processes, such as arthritis and metastasis. The encoded preproprotein is proteolytically processed to generate the mature protease. This secreted protease breaks down the interstitial collagens, including types I, II, and III. The gene is part of a cluster of MMP genes on chromosome 11. Mutations in this gene are associated with chronic obstructive pulmonary disease (COPD). Alternative splicing results in multiple transcript variants, at least one of which encodes an isoform that is proteolytically processed.</p>
Form	Freeze-dried powder
Molecular Mass	Predicted Molecular Mass: 53.5 kDa; Accurate Molecular Mass: 58&62 kDa

 Tel: 1-631-559-9269 1-516-512-3133

 Email: info@creative-biomart.com  Fax: 1-631-938-8127

 45-1 Ramsey Road, Shirley, NY 11967, USA

Purity	> 95%
Applications	Positive Control; Immunogen; SDS-PAGE; WB.
Stability	The thermal stability is described by the loss rate. The loss rate was determined by accelerated thermal degradation test, that is, incubate the protein at 37 centigrade for 48h, and no obvious degradation and precipitation were observed. The loss rate is less than 5% within the expiration date under appropriate storage condition.
Storage	Avoid repeated freeze/thaw cycles. Store at 2-8 centigrade for one month. Aliquot and store at -80 centigrade for 12 months.
Storage Buffer	20mM Tris, 150mM NaCl, pH8.0, containing 1mM EDTA, 1mM DTT, 0.01% SKL, 5% Trehalose and Proclin300.
Reconstitution	Reconstitute in 20mM Tris, 150mM NaCl (pH8.0) to a concentration of 0.1-1.0 mg/mL. Do not vortex.

GENE INFORMATION

Gene Name	MMP1 matrix metalloproteinase 1 (interstitial collagenase) [Homo sapiens (human)]
Official Symbol	MMP1
Synonyms	MMP1; matrix metalloproteinase 1 (interstitial collagenase); CLG, matrix metalloproteinase 1 (interstitial collagenase); interstitial collagenase; fibroblast collagenase; matrix metalloproteinase 1; matrix metalloproteinase 1; CLG; CLGN;
Gene ID	4312
mRNA Refseq	NM_001145938

 Tel: 1-631-559-9269 1-516-512-3133

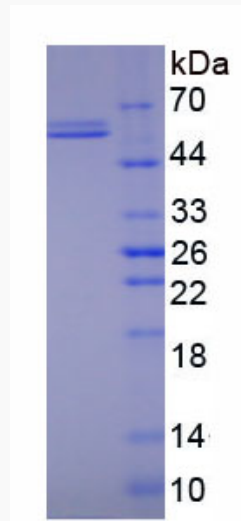
 Email: info@creative-biomart.com  Fax: 1-631-938-8127

 45-1 Ramsey Road, Shirley, NY 11967, USA

Protein Refseq NP_001139410

MIM 120353

UniProt ID P03956



 Tel: 1-631-559-9269 1-516-512-3133

 Email: info@creative-biomart.com  Fax: 1-631-938-8127

 45-1 Ramsey Road, Shirley, NY 11967, USA