

# Active Recombinant Human full length MMP1 protein, His-tagged, Low Endotoxin

Cat. No. MMP1-126H Lot. No. (See product label)

## SPECIFICATION

<b>Product Overview</b>	Active Recombinant Human full length MMP1 protein(NP_002412.1)(20-469 aa), fused with a His tag at the C-terminus, was expressed in HEK293.
<b>Species</b>	Human
<b>Source</b>	HEK293
<b>ProteinLength</b>	20-469 aa
<b>Form</b>	Lyophilized from a 0.22 µm filtered solution of PBS, pH 7.4.
<b>Bio-activity</b>	1.Measured in a cell migration assay using A549 cells. 1 ng/mL of Recombinant Human MMP-1 can effectively induce A549 cells migration. 2.Measured by its ability to cleave the fluorogenic peptide substrate, Mca-PLGL-Dpa-AR-NH <sub>2</sub> . The specific activity is >997 pmol/min/µg.
<b>Molecular Mass</b>	51.84 kDa
<b>Endotoxin</b>	< 0.1 EU/µg of the protein by LAL method.
<b>Purity</b>	≥ 95 % as determined by SDS-PAGE.
<b>Storage</b>	Store at -20°C. Store the lyophilized protein at -20°C to -80°C up to 1 year from the date of receipt. After reconstitution, the protein solution is stable at -20°C for 3

 Tel: 1-631-559-9269 1-516-512-3133

 Email: [info@creative-biomart.com](mailto:info@creative-biomart.com)  Fax: 1-631-938-8127

 45-1 Ramsey Road, Shirley, NY 11967, USA

months, at 2-8°C for up to 1 week.

**Reconstitution**

Centrifuge the vial before opening. Reconstitute to a concentration of 0.1-0.5 mg/mL in sterile distilled water. Avoid vortex or vigorously pipetting the protein. For long term storage, it is recommended to add a carrier protein or stabilizer (e.g. 0.1% BSA, 5% HSA, 10% FBS or 5% Trehalose), and aliquot the reconstituted protein solution to minimize free-thaw cycles.

**protein Refseq-Weblink**

[http://www.ncbi.nlm.nih.gov/protein/NP\\_001139410.1](http://www.ncbi.nlm.nih.gov/protein/NP_001139410.1)

**Unit ID**

P03956

**Unit ID-Weblink**

<https://www.uniprot.org/uniprot/P03956>

## GENE INFORMATION

**Gene Name**

[MMP1 matrix metalloproteinase 1 \(interstitial collagenase\) \[ Homo sapiens \]](#)

**Official Symbol**

[MMP1](#)

**Synonyms**

MMP1; matrix metalloproteinase 1 (interstitial collagenase); CLG, matrix metalloproteinase 1 (interstitial collagenase); interstitial collagenase; fibroblast collagenase; matrix metalloproteinase 1; matrix metalloproteinase 1; CLG; CLGN;

**Gene ID**

[4312](#)

**mRNA Refseq**

[NM\\_001145938](#)

**protein Refseq**

[NP\\_001139410](#)

 Tel: 1-631-559-9269 1-516-512-3133

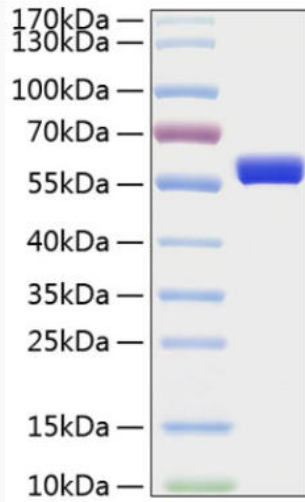
 Email: [info@creative-biomart.com](mailto:info@creative-biomart.com)  Fax: 1-631-938-8127

 45-1 Ramsey Road, Shirley, NY 11967, USA

MIM

120353

SDS-PAGE



 Tel: 1-631-559-9269 1-516-512-3133

 Email: [info@creative-biomart.com](mailto:info@creative-biomart.com)  Fax: 1-631-938-8127

 45-1 Ramsey Road, Shirley, NY 11967, USA