

# Recombinant Human MMP1 Protein, Myc/DDK-tagged, C13 and N15-labeled

**Cat. No.** MMP1-4231H    **Lot. No.** (See product label)

## SPECIFICATION

<b>Product Overview</b>	MMP1 MS Standard C13 and N15-labeled recombinant protein (NP_002412) with a C-terminal MYC/DDK tag, was expressed in HEK293 cells.
<b>Species</b>	Human
<b>Source</b>	HEK293
<b>Description</b>	<p>This gene encodes a member of the peptidase M10 family of matrix metalloproteinases (MMPs). Proteins in this family are involved in the breakdown of extracellular matrix in normal physiological processes, such as embryonic development, reproduction, and tissue remodeling, as well as in disease processes, such as arthritis and metastasis. The encoded preproprotein is proteolytically processed to generate the mature protease. This secreted protease breaks down the interstitial collagens, including types I, II, and III. The gene is part of a cluster of MMP genes on chromosome 11. Mutations in this gene are associated with chronic obstructive pulmonary disease (COPD). Alternative splicing results in multiple transcript variants, at least one of which encodes an isoform that is proteolytically processed.</p>
<b>Molecular Mass</b>	54 kDa
<b>AA Sequence</b>	MHSFPPLLLLLFWGVVSHSFPATLETQEVDLVQKYLEKYNNLKNDRQVEKRRN SGPVVEKCLKMQEFFGLKVTGKPAETLKV MKQPRCGVPDVAQFVLTEGNPRWEQ

 Tel: 1-631-559-9269    1-516-512-3133

 Email: [info@creative-biomart.com](mailto:info@creative-biomart.com)     Fax: 1-631-938-8127

 45-1 Ramsey Road, Shirley, NY 11967, USA

THLTYRIENYTPDLPRADVDHAIEKAFQLWSNVTPLTFTKVSEGQADIMISFVRGDHR  
 DNSPFDGPGGNLAHAFQPGPGIGGDAHFDERWTNNFREYNLHRVAAHELGHSL  
 GLSHSTDIGALMYPSTYFSGDVQLAQDDIDGIQAIYGRSQNPVQPIGPQTPKACDSK  
 LTFDAITTIRGEVMFFKDRFYMRTNPFYPEVELNFISVFWPQLPNGLEAAAYEFADRDE  
 VRFFKGNKYWAVQQQNVLHGYPKDIYSSFGFPRTVKHIDAALSEENTGKTYFFVAN  
 KYWRYDEYKRSMDPGYPKMIAHDFPGIGHKVDAVFMKDGFFYFFHGTQRQYKFDPK  
 TKRILTLQKANSWFNCRKNTRTRPLEQKLISEEDLAANDILDYKDDDDKV

**Purity** > 80% as determined by SDS-PAGE and Coomassie blue staining

**Stability** Stable for 3 months from receipt of products under proper storage and handling conditions.

**Storage** Store at -80 centigrade. Avoid repeated freeze-thaw cycles.

**Concentration** 50 µg/mL as determined by BCA

**Storage Buffer** 100 mM glycine, 25 mM Tris-HCl, pH 7.3.

## GENE INFORMATION

**Gene Name** [MMP1 matrix metalloproteinase 1 \[ Homo sapiens \(human\) \]](#)

**Official Symbol** [MMP1](#)

**Synonyms** MMP1; matrix metalloproteinase 1 (interstitial collagenase); CLG, matrix metalloproteinase 1 (interstitial collagenase); interstitial collagenase; fibroblast collagenase; matrix metalloproteinase 1; matrix metalloproteinase 1; CLG; CLGN;

**Gene ID** [4312](#)

 Tel: 1-631-559-9269 1-516-512-3133

 Email: [info@creative-biomart.com](mailto:info@creative-biomart.com)  Fax: 1-631-938-8127

 45-1 Ramsey Road, Shirley, NY 11967, USA

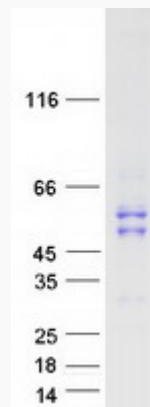
mRNA Refseq [NM\\_002421](#)

Protein Refseq [NP\\_002412](#)

MIM [120353](#)

UniProt ID [P03956](#)

SDS-PAGE



 Tel: 1-631-559-9269 1-516-512-3133

 Email: [info@creative-biomart.com](mailto:info@creative-biomart.com)  Fax: 1-631-938-8127

 45-1 Ramsey Road, Shirley, NY 11967, USA