

Recombinant Human MMP1 Protein, GST-tagged

Cat. No. MMP1-5413H **Lot. No.** (See product label)

SPECIFICATION

Product Overview	Human MMP1 full-length ORF (NP_002412.1, 1 a.a. - 469 a.a.) recombinant protein with GST-tag at N-terminal.
Species	Human
Source	Wheat Germ
Description	<p>Proteins of the matrix metalloproteinase (MMP) family are involved in the breakdown of extracellular matrix in normal physiological processes, such as embryonic development, reproduction, and tissue remodeling, as well as in disease processes, such as arthritis and metastasis. Most MMPs are secreted as inactive proproteins which are activated when cleaved by extracellular proteinases. This gene encodes a secreted enzyme which breaks down the interstitial collagens, types I, II, and III. The gene is part of a cluster of MMP genes which localize to chromosome 11q22.3. Alternative splicing results in multiple transcript variants.[provided by RefSeq</p>
Molecular Mass	80.4 kDa
AA Sequence	<p>MHSFPPLLLLLFWGVVSHSFPATLETQEQDVDLVQKYLEKYNNLKNDRQVEKRRN SGPVVEKCLKQMQUEFFGLKVTGKPD AETLKVMKQPRCGVPDVAQFVLTEGNPRWEQ THLTYRIENYTPDLPRADV DHAIEKAFQLWSNV TPLTFTKVSEGQADIMISFVRGDHR DNSPFDGPGGNLAHAFQPGPGIGGDAHFDEDERWTNNFREYNLHRVAAHELGHSL GLSHSTDIGALMYPSTFSGDVQLAQDDIDGIQAIYGRSQNPVQPIGPQTPKACDSK LTFDAITTIRGEVMFFKDRFYMRTNPFYPEVELNFISVFWPQLPNGLEAAAYEFADRDE</p>

 Tel: 1-631-559-9269 1-516-512-3133

 Email: info@creative-biomart.com  Fax: 1-631-938-8127

 45-1 Ramsey Road, Shirley, NY 11967, USA

VRFFKGNKYWAVQQQNVLHGYPKDIYSSFGFPRTVKHIDAALSEENTGKTYFFVAN
 KYWRYDEYKRSMDPGYPKMIAHDFPGIGHKVDVAVFMKDGFFYFFHGTQRQYKFDPK
 TKRILTLQKANSWFNCRKN

Applications
 Enzyme-linked Immunoabsorbent Assay
 Western Blot (Recombinant protein)
 Antibody Production
 Protein Array

Notes Best use within three months from the date of receipt of this protein.

Storage Store at -80 centigrade. Aliquot to avoid repeated freezing and thawing.

Storage Buffer 50 mM Tris-HCl, 10 mM reduced Glutathione, pH=8.0 in the elution buffer.

GENE INFORMATION

Gene Name [MMP1 matrix metalloproteinase 1 \(interstitial collagenase\) \[Homo sapiens \]](#)

Official Symbol [MMP1](#)

Synonyms MMP1; matrix metalloproteinase 1 (interstitial collagenase); CLG, matrix metalloproteinase 1 (interstitial collagenase); interstitial collagenase; fibroblast collagenase; matrix metalloproteinase 1; matrix metalloproteinase 1; CLG; CLGN;

Gene ID [4312](#)

mRNA Refseq [NM_001145938](#)

Protein Refseq [NP_001139410](#)

 Tel: 1-631-559-9269 1-516-512-3133

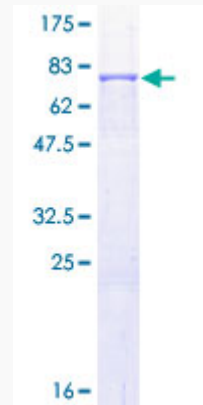
 Email: info@creative-biomart.com  Fax: 1-631-938-8127

 45-1 Ramsey Road, Shirley, NY 11967, USA

MIM 120353

UniProt ID P03956

**Quality Control
Testing:**



12.5% SDS-PAGE Stained with Coomassie Blue.

 Tel: 1-631-559-9269 1-516-512-3133

 Email: info@creative-biomart.com  Fax: 1-631-938-8127

 45-1 Ramsey Road, Shirley, NY 11967, USA