

## Recombinant Human MMP11 Protein, His tagged

Cat. No. MMP11-33H Lot. No. (See product label)

### SPECIFICATION

<b>Product Overview</b>	A DNA sequence encoding human matrix metalloproteinase 11 corresponding to amino acid (1-488) was expressed with a C-terminal polyhistidine tag.
<b>Species</b>	Human
<b>Source</b>	HEK293
<b>ProteinLength</b>	1-488 aa
<b>Description</b>	Proteins of the matrix metalloproteinase (MMP) family are involved in the breakdown of extracellular matrix in normal physiological processes, such as embryonic development, reproduction, and tissue remodeling, as well as in disease processes, such as arthritis and metastasis. Most MMP's are secreted as inactive proproteins which are activated when cleaved by extracellular proteinases. However, the enzyme encoded by this gene is activated intracellularly by furin within the constitutive secretory pathway. Also in contrast to other MMP's, this enzyme cleaves alpha 1-proteinase inhibitor but weakly degrades structural proteins of the extracellular matrix.
<b>Form</b>	Liquid
<b>AASequence</b>	MAPAAWLRSAAARALLPPMLLLLLQPPLLARALPPDAHHLHAERRGPQPWHAALP SSPAPAPATQEAPRPASSLRPPRCGVPDPSDGLSARNRQKRFLVSGGRWEKTDLT YRILRFPWQLVQEQVRQTMAEALKVWSDVTPLTFTEVHEGRADIMIDFARYWHGDD LPFDGPGGILAHAFSPKTHREGDVHFDYDETWTIGDDQGTDLLQVAAHEFGHVLGL QHTTAAKALMSAFYTFRYPLSLSPDDCRGVQHLYGQPWPTVTSRTPALGPQAGIDT

 Tel: 1-631-559-9269 1-516-512-3133

 Email: [info@creative-biomart.com](mailto:info@creative-biomart.com)  Fax: 1-631-938-8127

 45-1 Ramsey Road, Shirley, NY 11967, USA



NEIAPLEPDAPPDACEASFDAVSTIRGELFFFKAGFVWRLRGGQLQPGYPALASRH  
WQGLPSPVDAAFEDAQGGHIWFFQGAQYWVYDGEKPVLPAPLTELGLVRFVHAA  
LVWGPEKNKIYFFRGRDYWRFHPSTRRVDSVPVRRATDWRGVPSEIDAAFQDADG  
YAYFLRGRLYWKFDPAVKVKALEGFPRLVGPDDFFGCAEPANTFL

**Molecular Mass** 44.1 kDa

**Purity** > 95% as determined by SDS-PAGE

**Storage** Store it at +4 centigrade for short term. For long term storage, store it at -20 to -70 centigrade.

**Storage Buffer** PBS, pH7.4

**Concentration** 0.15 mg/mL

## GENE INFORMATION

**Gene Name** MMP11 matrix metalloproteinase 11 (stromelysin 3) [ Homo sapiens (human) ]

**Official Symbol** MMP11

**Synonyms** MMP11; matrix metalloproteinase 11 (stromelysin 3); matrix metalloproteinase 11 (stromelysin 3), STMY3; stromelysin-3; MMP-11; stromelysin III; ST3; SL-3; STMY3;

**Gene ID** 4320

**mRNA Refseq** NM\_005940

**Protein Refseq** NP\_005931

Tel: 1-631-559-9269 1-516-512-3133

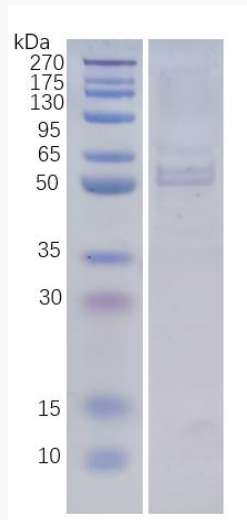
Email: [info@creative-biomart.com](mailto:info@creative-biomart.com) Fax: 1-631-938-8127

45-1 Ramsey Road, Shirley, NY 11967, USA

**MIM** 185261

**UniProt ID** P24347

**SDS-PAGE and WB**



12% reducing SDS-PAGE analysis profiles of purified human MMP11 (CBB stained)

 Tel: 1-631-559-9269 1-516-512-3133

 Email: [info@creative-biomart.com](mailto:info@creative-biomart.com)  Fax: 1-631-938-8127

 45-1 Ramsey Road, Shirley, NY 11967, USA