

Recombinant Human MMP11, GST-His

Cat. No. MMP11-830H Lot. No. (See product label)

SPECIFICATION

Product Overview	Recombinant Human MMP11 was produced in E.coli with a GST-His tag. MW = 79817 Da (33-488 aa).
Species	Human
Source	E.coli
ProteinLength	33-488 a.a.
Description	Proteins of the matrix metalloproteinase (MMP) family are involved in the breakdown of extracellular matrix in normal physiological processes, such as embryonic development, reproduction, and tissue remodeling, as well as in disease processes, such as arthritis and metastasis. Most MMP"s are secreted as inactive proproteins which are activated when cleaved by extracellular proteinases. However, the enzyme encoded by this gene is activated intracellularly by furin within the constitutive secretory pathway. Also in contrast to other MMP"s, this enzyme cleaves alpha 1-proteinase inhibitor but weakly degrades structural proteins of the extracellular matrix.
Form	Supplied in 20 mM Tris-HCl, 0.5 M NaCl, 100 mM imidazole, 1 mM 2-mercaptoethanol; pH 8.0 and contains not preservatives.
Clonality	N/A.
Applications	ELISA, WB, Antibody Production, Protein array.

 Tel: 1-631-559-9269 1-516-512-3133

 Email: info@creative-biomart.com  Fax: 1-631-938-8127


 45-1 Ramsey Road, Shirley, NY 11967, USA

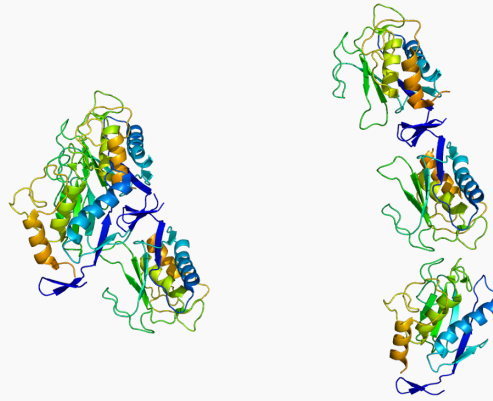
GENE INFORMATION

Gene Name	MMP11 matrix metalloproteinase 11 (stromelysin 3) [Homo sapiens]
Synonyms	MMP11; matrix metalloproteinase 11 (stromelysin 3); ST3; SL-3; STMY3; stromelysin-3; MMP-11; stromelysin 3; stromelysin III; OTTHUMP00000198424; matrix metalloproteinase-11; matrix metalloproteinase 11 (stromelysin 3); EC 3.4.24.-
Gene ID	4320
mRNA Refseq	NM_005940
Protein Refseq	NP_005931
MIM	185261
UniProt ID	P24347
Chromosome Location	22q11.2; 22q11.23
Function	calcium ion binding; metalloendopeptidase activity; peptidase activity; zinc ion binding

 Tel: 1-631-559-9269 1-516-512-3133

 Email: info@creative-biomart.com  Fax: 1-631-938-8127

 45-1 Ramsey Road, Shirley, NY 11967, USA



Tel: 1-631-559-9269 1-516-512-3133

Email: info@creative-biomart.com Fax: 1-631-938-8127

45-1 Ramsey Road, Shirley, NY 11967, USA