

Recombinant Rat MMP12 Protein

Cat. No. MMP12-01R Lot. No. (See product label)

SPECIFICATION

Product Overview	Recombinant Rat MMP12 Protein was expressed in E. coli.
Species	Rat
Source	E.coli
ProteinLength	102-465 a.a.
Description	<p>Predicted to enable several functions, including core promoter sequence-specific DNA binding activity; metal ion binding activity; and metalloendopeptidase activity. Involved in several processes, including positive regulation of epithelial cell proliferation; regulation of trophoblast cell migration; and response to hypoxia. Predicted to be located in cytoplasm; extracellular space; and nucleus. Used to study crescentic glomerulonephritis. Biomarker of anti-basement membrane glomerulonephritis and crescentic glomerulonephritis. Human ortholog(s) of this gene implicated in Barrett's esophagus; artery disease (multiple); coronary aneurysm; esophagus adenocarcinoma; and multiple sclerosis. Orthologous to human MMP12 (matrix metallopeptidase 12).</p>
Form	PBS, pH 7.4, 0.35 M Arginine, 10% Glycerol.
Molecular Mass	43 kDa
AA Sequence	MRSRWMKRYLTYRIYNYTPDMKRADVDYIFQKAFQVWSDVTPLRFRKIHKGADITI LFAFGDHGDFYDFDGKGGTLAHAFYPGPGIQGDAHFEAETWTKSFQGTNLFLVAV

 Tel: 1-631-559-9269 1-516-512-3133

 Email: info@creative-biomart.com  Fax: 1-631-938-8127

 45-1 Ramsey Road, Shirley, NY 11967, USA

HELGHSLGLRHSNNPKSIMYPTYRYLHPNTFRLSADDIHSIQSLYGAPVKNPSLTNP
 GSPPSTVCHQSLSFDAVTTVGDKIFFFKDWFFWWRLPGSPATNITSISSMWPTIPSG
 IQAAYEIGGRNQLFLFKDEKYWLINNLVPEPHYPRSIHSLGFPASVKKIDA AVFDPLR
 QKVYFFVDKQYWRYDVRQELMDAAYPKLISTHFPGIRPKIDAVLYFKRHHYIFQGAY
 QLEYDPLLDRVTKTLSSTSWFGCLRHHHHHHH

Purity > 90%

Storage Store it under sterile conditions at -20 to -80 centigrade. It is recommended that the protein be aliquoted for optimal storage. Avoid repeated freeze-thaw cycles.

Concentration 0.111mg/ml

GENE INFORMATION

Gene Name [Mmp12 matrix metalloproteinase 12 \[Rattus norvegicus \(Norway rat\) \]](#)

Official Symbol [Mmp12](#)

Synonyms ME; HME; MME; MMP-12

Gene ID [117033](#)

mRNA Refseq [NM_053963](#)

Protein Refseq [NP_446415](#)

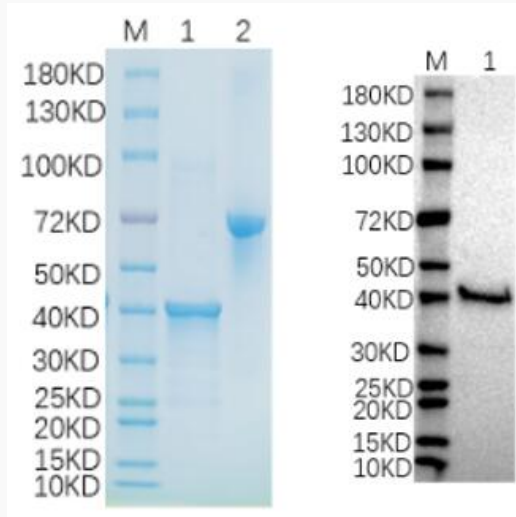
UniProt ID [Q63341](#)

 Tel: 1-631-559-9269 1-516-512-3133

 Email: info@creative-biomart.com  Fax: 1-631-938-8127

 45-1 Ramsey Road, Shirley, NY 11967, USA

**Reducing 12% SDS-
PAGE and WB
analysis profiles of
purified MMP12**



Lane 1: MMP12

Lane 2: BSA

 Tel: 1-631-559-9269 1-516-512-3133

 Email: info@creative-biomart.com  Fax: 1-631-938-8127

 45-1 Ramsey Road, Shirley, NY 11967, USA