

# Recombinant Human matrix metalloproteinase 12 Protein, Flag tagged

Cat. No. MMP12-221H Lot. No. (See product label)

## SPECIFICATION

<b>Product Overview</b>	Recombinant human MMP12 protein (P39900) (Ala 280-Cys 470) with a Flag tag at the C-terminus was expressed in HEK293.
<b>Species</b>	Human
<b>Source</b>	HEK293
<b>ProteinLength</b>	280-470aa
<b>Description</b>	<p>The matrix metalloproteinases (MMP) are a family of peptidase enzymes responsible for the degradation of extracellular matrix components, including collagen, gelatin, fibronectin, laminin and proteoglycan. Transcription of MMP genes is differentially activated by phorbol ester, lipopolysaccharide (LPS) or staphylococcal enterotoxin B (SEB). MMP catalysis requires both calcium and zinc. MMP-12 (also designated macrophage metalloelastase) is produced in alveolar macrophages and degrades elastin. MMP-12 may contribute to elastin degradation occurring in granulomatous skin diseases and may also participate in macrophage migration through the epidermal and vascular basement membranes in inflammatory disorders.</p>
<b>Tag</b>	C-Flag
<b>Molecular Mass</b>	24.4 kDa
<b>Endotoxin</b>	Less than 1.0 EU/μg by the LAL method.

 Tel: 1-631-559-9269 1-516-512-3133

 Email: [info@creative-biomart.com](mailto:info@creative-biomart.com)  Fax: 1-631-938-8127

 45-1 Ramsey Road, Shirley, NY 11967, USA

<b>Purity</b>	>95% as determined by SDS-PAGE.
<b>Storage</b>	Please avoid repeated freeze-thaw cycles. Samples are stable for up to twelve months from date of receipt at -20 to -80 centigrade. It is recommended that aliquot the reconstituted solution to minimize freeze-thaw cycles.
<b>Storage Buffer</b>	Lyophilized from a 0.2 µm filtered solution of PBS, pH7.4, 5% Trehalose, 5% mannitol.
<b>Reconstitution</b>	Reconstitute at 250 µg/mL in sterile water.

## GENE INFORMATION

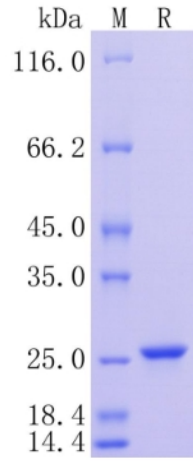
<b>Gene Name</b>	MMP12 matrix metalloproteinase 12 [ Homo sapiens (human) ]
<b>Official Symbol</b>	MMP12
<b>Synonyms</b>	MMP12; matrix metalloproteinase 12 (macrophage elastase); matrix metalloproteinase 12 (macrophage elastase); macrophage metalloelastase; HME; macrophage elastase; matrix metalloproteinase-12; ME; MME; MMP-12; MGC138506;
<b>Gene ID</b>	4321
<b>mRNA Refseq</b>	NM_002426
<b>Protein Refseq</b>	NP_002417
<b>MIM</b>	601046
<b>UniProt ID</b>	P39900

 Tel: 1-631-559-9269 1-516-512-3133

 Email: [info@creative-biomart.com](mailto:info@creative-biomart.com)  Fax: 1-631-938-8127

 45-1 Ramsey Road, Shirley, NY 11967, USA

**Protein on SDS-  
PAGE under  
reducing (R)  
condition.**



 Tel: 1-631-559-9269 1-516-512-3133

 Email: [info@creative-biomart.com](mailto:info@creative-biomart.com)  Fax: 1-631-938-8127

 45-1 Ramsey Road, Shirley, NY 11967, USA