

Recombinant Cattle MMP13 Protein, His-tagged

Cat. No. MMP13-1119C Lot. No. (See product label)

SPECIFICATION

Product Overview	Recombinant Cattle MMP13 Protein (Tyr104-Glu319) with His tag was expressed in E. coli.
Species	Cattle
Source	E.coli
ProteinLength	Tyr104-Glu319
Description	This gene encodes a member of the peptidase M10 family of matrix metalloproteinases (MMPs). Proteins in this family are involved in the breakdown of extracellular matrix in normal physiological processes, such as embryonic development, reproduction, and tissue remodeling, as well as in disease processes, such as arthritis and metastasis. The encoded preproprotein is proteolytically processed to generate the mature protease. This protease cleaves type II collagen more efficiently than types I and III. It may be involved in articular cartilage turnover and cartilage pathophysiology associated with osteoarthritis. Mutations in this gene are associated with metaphyseal anadysplasia. This gene is part of a cluster of MMP genes on chromosome 11.
Form	Freeze-dried powder
Molecular Mass	Predicted Molecular Mass: 28.2 kDa; Accurate Molecular Mass: 32 kDa
Purity	> 90%

 Tel: 1-631-559-9269 1-516-512-3133

 Email: info@creative-biomart.com  Fax: 1-631-938-8127

 45-1 Ramsey Road, Shirley, NY 11967, USA

Applications	Positive Control; Immunogen; SDS-PAGE; WB.
Stability	The thermal stability is described by the loss rate. The loss rate was determined by accelerated thermal degradation test, that is, incubate the protein at 37 centigrade for 48h, and no obvious degradation and precipitation were observed. The loss rate is less than 5% within the expiration date under appropriate storage condition.
Storage	Avoid repeated freeze/thaw cycles. Store at 2-8 centigrade for one month. Aliquot and store at -80 centigrade for 12 months.
Storage Buffer	PBS, pH7.4, containing 0.01% SKL, 1mM DTT, 5% Trehalose and Proclin300.
Reconstitution	Reconstitute in PBS or others.

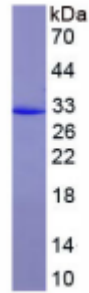
GENE INFORMATION

Gene Name	MMP13 matrix metalloproteinase 13 [Bos taurus (cattle)]
Official Symbol	MMP13
Synonyms	MMP13; matrix metalloproteinase 13; collagenase 3; MMP-13; matrix metalloproteinase 13 (collagenase 3); matrix metalloproteinase-13; EC 3.4.24.-
Gene ID	281914
mRNA Refseq	NM_174389
Protein Refseq	NP_776814
UniProt ID	www.uniprot.org/uniprot/O77656

 Tel: 1-631-559-9269 1-516-512-3133

 Email: info@creative-biomart.com  Fax: 1-631-938-8127

 45-1 Ramsey Road, Shirley, NY 11967, USA



Tel: 1-631-559-9269 1-516-512-3133

Email: info@creative-biomart.com Fax: 1-631-938-8127

45-1 Ramsey Road, Shirley, NY 11967, USA