

Recombinant Dog MMP13 Protein (28-478 aa), His-SUMO-tagged

Cat. No. MMP13-2045D Lot. No. (See product label)

SPECIFICATION

Product Overview Recombinant Dog MMP13 Protein (28-478 aa) is produced by E. coli expression system. This protein is fused with a 6xHis-SUMO tag at the N-terminal. Research Area: Cardiovascular. Protein Description: Full Length of Mature Protein.

Species Dog

Source E.coli

ProteinLength 28-478 aa

Form Tris-based buffer,50% glycerol

Molecular Mass 67.5 kDa

AA Sequence

```
LPLPSDGDDDLSEEDFQLAERYLKSYYYPLNPAGILKKSAAAGSVADRLREMQSFFGL
EVTGKLDNTLDIMKKPRCGVPDVGEYNVFPRTLKWSKTNLTYRIVNYTPDLTHSEV
EKAFKKAFKVWSDVTPLNFTRLHDGTADIMISFGTKEHGDFYPFDGPGSGLLAHAFFP
GPNYGGDAHFDDDETWTSSSKGYNLFLVAAHEFGHSLGLDHSKDPGALMFPIYTYT
GKSHFMLPDDDVQGIQSLYGPGEDEPNPRHPKTPDKCDPSLSLDAITSLRGETMIFK
DRFFWRLHPQQVDAELFLTKSFWPELPNRIDAAAYEHPSRDLIFRGRKYWALNGYD
ILEGYPQKISELGFPKEVKKISA AVHFEDTGKTLFFSGNQVWSYDDTNQIMDKDYPRL
IEEDFPGIGDKVDAVYEKNGYIYFFNGPIQFEYNIWSKRIVRVMPANSLWC
```

Purity > 90% as determined by SDS-PAGE.

 Tel: 1-631-559-9269 1-516-512-3133

 Email: info@creative-biomart.com  Fax: 1-631-938-8127

 45-1 Ramsey Road, Shirley, NY 11967, USA

Notes	Repeated freezing and thawing is not recommended. Store working aliquots at 4 centigrade for up to one week.
Storage	The shelf life is related to many factors, storage state, buffer ingredients, storage temperature and the stability of the protein itself. Generally, the shelf life of liquid form is 6 months at -20 centigrade/-80 centigrade. The shelf life of lyophilized form is 12 months at -20 centigrade/-80 centigrade.
Concentration	A hardcopy of COA with reconstitution instruction is sent along with the products.

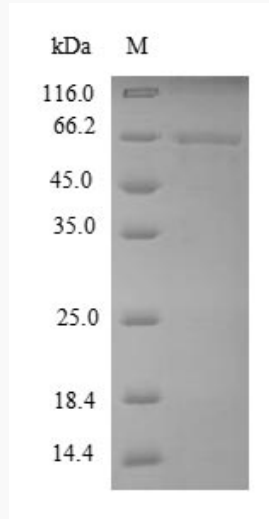
GENE INFORMATION

Gene Name	MMP13 matrix metalloproteinase 13 (collagenase 3) [<i>Canis lupus familiaris</i>]
Official Symbol	MMP13
Synonyms	MMP13; collagenase 3; matrix metalloproteinase-13;
Gene ID	403763
UniProt ID	A0A0C6E3R7

 Tel: 1-631-559-9269 1-516-512-3133

 Email: info@creative-biomart.com  Fax: 1-631-938-8127

 45-1 Ramsey Road, Shirley, NY 11967, USA



(Tris-Glycine gel) Discontinuous SDS-PAGE (reduced) with 5% enrichment gel and 15% separation gel.

 Tel: 1-631-559-9269 1-516-512-3133

 Email: info@creative-biomart.com  Fax: 1-631-938-8127

 45-1 Ramsey Road, Shirley, NY 11967, USA