

## Recombinant Human matrix metalloproteinase 13 Protein, His&Flag tagged

Cat. No. MMP13-219H Lot. No. (See product label)

### SPECIFICATION

<b>Product Overview</b>	Recombinant human MMP13 protein (P45452) (Leu 20-Cys 471) with both His, Flag tag at the C-terminus was expressed in HEK293.
<b>Species</b>	Human
<b>Source</b>	HEK293
<b>ProteinLength</b>	20-471aa
<b>Description</b>	<p>The matrix metalloproteinases (MMP) are a family of peptidase enzymes responsible for the degradation of extracellular matrix components, including collagen, gelatin, fibronectin, laminin and proteoglycan. Transcription of MMP genes is differentially activated by phorbol ester, lipopolysaccharide (LPS) or staphylococcal enterotoxin B (SEB). MMP catalysis requires both calcium and zinc. MMP-13 (also designated collagenase-3) is produced by breast carcinomas and degrades collagen types I, II and III. MMP-13 has wide substrate specificity, and its physiologic expression is limited to situations in which rapid and effective remodeling of collagenous ECM takes place, such as fetal bone development and adult bone remodeling.</p>
<b>Tag</b>	C-His&Flag
<b>Molecular Mass</b>	54.4 kDa
<b>Endotoxin</b>	Less than 1.0 EU/μg by the LAL method.

 Tel: 1-631-559-9269 1-516-512-3133

 Email: [info@creative-biomart.com](mailto:info@creative-biomart.com)  Fax: 1-631-938-8127

 45-1 Ramsey Road, Shirley, NY 11967, USA

<b>Purity</b>	>95% as determined by SDS-PAGE.
<b>Storage</b>	Please avoid repeated freeze-thaw cycles. Samples are stable for up to twelve months from date of receipt at -20 to -80 centigrade. It is recommended that aliquot the reconstituted solution to minimize freeze-thaw cycles.
<b>Storage Buffer</b>	Lyophilized from a 0.2 µm filtered solution of PBS, pH7.4, 5% Trehalose, 5% mannitol.
<b>Reconstitution</b>	Reconstitute at 250 µg/mL in sterile water.

## GENE INFORMATION

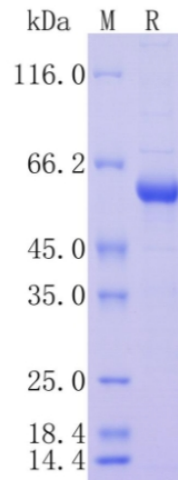
<b>Gene Name</b>	MMP13 matrix metalloproteinase 13 [ Homo sapiens (human) ]
<b>Official Symbol</b>	MMP13
<b>Synonyms</b>	MMP13; matrix metalloproteinase 13 (collagenase 3); matrix metalloproteinase 13 (collagenase 3); collagenase 3; CLG3; MMP-13; MANDP1;
<b>Gene ID</b>	4322
<b>mRNA Refseq</b>	NM_002427
<b>Protein Refseq</b>	NP_002418
<b>MIM</b>	600108
<b>UniProt ID</b>	P45452

 Tel: 1-631-559-9269 1-516-512-3133

 Email: [info@creative-biomart.com](mailto:info@creative-biomart.com)  Fax: 1-631-938-8127

 45-1 Ramsey Road, Shirley, NY 11967, USA

**Protein on SDS-  
PAGE under  
reducing (R)  
condition.**



 Tel: 1-631-559-9269 1-516-512-3133

 Email: [info@creative-biomart.com](mailto:info@creative-biomart.com)  Fax: 1-631-938-8127

 45-1 Ramsey Road, Shirley, NY 11967, USA