

Active Recombinant Human MMP13 Protein

Cat. No. MMP13-5420H Lot. No. (See product label)

SPECIFICATION

| | |
|-------------------------|---|
| Product Overview | Human MMP13 (104 a.a. - 274 a.a.) partial recombinant protein expressed in Escherichia coli. |
| Species | Human |
| Source | E.coli |
| ProteinLength | 104.-274. a.a. |
| Description | <p>Proteins of the matrix metalloproteinase (MMP) family are involved in the breakdown of extracellular matrix in normal physiological processes, such as embryonic development, reproduction, and tissue remodeling, as well as in disease processes, such as arthritis and metastasis. Most MMPs are secreted as inactive proproteins which are activated when cleaved by extracellular proteinases. The protein encoded by this gene cleaves type II collagen more efficiently than types I and III. It may be involved in articular cartilage turnover and cartilage pathophysiology associated with osteoarthritis. The gene is part of a cluster of MMP genes which localize to chromosome 11q22.3. [provided by RefSeq</p> |
| Form | Liquid |
| Bio-activity | > 500 mU/mg |
| Molecular Mass | 19.5 kDa |

 Tel: 1-631-559-9269 1-516-512-3133

 Email: info@creative-biomart.com  Fax: 1-631-938-8127

 45-1 Ramsey Road, Shirley, NY 11967, USA

| | |
|-----------------------|---|
| AA Sequence | YNVFPRTLKWSKMNLTYRIVNYTPDMTHSEVEKAFKKAQVWSDVTPLNFTRLHDGI ADIMISFGIKEHGFYDFDPSGLLAHAFPPGPNYGGDAHFDDDETWTSSSKGYNL FLVAAHEFGHSLGLDHSKDPGALMFPIYTYTGKSHFMLPDDDVQGIQSLYGPGEDED PN |
| Purity | > 90% by SDS-PAGE |
| Applications | Functional Study SDS-PAGE |
| Storage | Store at -80 centigrade. Aliquot to avoid repeated freezing and thawing. |
| Concentration | 0.2 mg/mL |
| Storage Buffer | In 50 mM Tris-HCl, 150 mM NaCl, 5 mM CaCl ₂ , pH 7.5 |

GENE INFORMATION

| | |
|------------------------|---|
| Gene Name | MMP13 matrix metalloproteinase 13 (collagenase 3) [Homo sapiens] |
| Official Symbol | MMP13 |
| Synonyms | MMP13; matrix metalloproteinase 13 (collagenase 3); matrix metalloproteinase 13 (collagenase 3); collagenase 3; CLG3; MMP-13; MANDP1; |
| Gene ID | 4322 |
| mRNA Refseq | NM_002427 |
| Protein Refseq | NP_002418 |

 Tel: 1-631-559-9269 1-516-512-3133

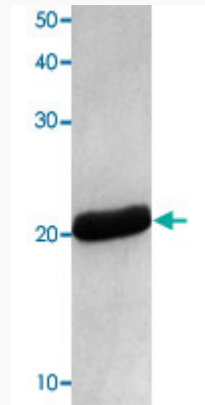
 Email: info@creative-biomart.com  Fax: 1-631-938-8127

 45-1 Ramsey Road, Shirley, NY 11967, USA

MIM 600108

UniProt ID P45452

**Quality Control
Testing:**



15% SDS-PAGE Stained with Coomassie Blue

 Tel: 1-631-559-9269 1-516-512-3133

 Email: info@creative-biomart.com  Fax: 1-631-938-8127

 45-1 Ramsey Road, Shirley, NY 11967, USA