

Recombinant Human MMP13 protein, His-tagged

Cat. No. MMP13-7853H Lot. No. (See product label)

SPECIFICATION

Product Overview	Recombinant Human MMP13 protein(100-471 aa), fused with N-terminal His tag, was expressed in E. coli.
Species	Human
Source	E. coli
ProteinLength	100-471 aa
Form	The purified protein was lyophilized from sterile phosphate-buffered saline (PBS: 58 mM Na ₂ HPO ₄ , 17 mM NaH ₂ PO ₄ , 68 mM NaCl, pH 7.4). Prior to lyophilization, 5% (w/v) trehalose and 5% (w/v) mannitol were incorporated as cryoprotective excipients. The protein was eluted with a buffer containing 300 mM imidazole.
AASequence	DVGEYNVFPRTLKWSKMNLTYRIVNYTPDMTHSEVEKAFKKAFKVWSDVTPLNFTR LHDGIADIMISFGIKEHGDFYFPDGP SGLLAHAFPPGPNYGGDAHFDDETWTSSSK GYNLFLVAAHEFGHSLGLDHSKDPGALMFPIYTYTGKSHFMLPDDDVQGIQSLYGP GDEDPNPKHPKTPDKCDPSLSLDAITSLRGETMIFKDRFFWRLHPQQVDAELFLT KSFWPELPNRIDAAYEHPSHDLIFIFRGRKFWALNGYDILEGYPKKISELGLPKEVKKISA AVHFEDTGKTLFSGNQVWRYDDTNHIMDKDYPRLIEEDFPGIGDKVDAVYEKNGYI YFFNGPIQFEYSIWSNRIVRVM PANSILWC
Purity	85%, by SDS-PAGE.
Storage	Store at 2-8°C for 1-2 weeks. Aliquot and store at -20°C to -80°C for up to 3 months,

 Tel: 1-631-559-9269 1-516-512-3133

 Email: info@creative-biomart.com  Fax: 1-631-938-8127

 45-1 Ramsey Road, Shirley, NY 11967, USA

reconstitution with sterile water and addition of an equal volume of glycerol. Avoid repeat freeze-thaw cycles.

Reconstitution

It is recommended that sterile water be added to the vial to prepare a stock solution of 0.25 ug/ul. Centrifuge the vial at 4°C before opening to recover the entire contents.

GENE INFORMATION

Gene Name [MMP13 matrix metalloproteinase 13 \(collagenase 3\) \[Homo sapiens \]](#)

Official Symbol [MMP13](#)

Synonyms [MMP13](#); [matrix metalloproteinase 13 \(collagenase 3\)](#); [matrix metalloproteinase 13 \(collagenase 3\)](#); [collagenase 3](#); [CLG3](#); [MMP-13](#); [MANDP1](#);

mRNA Refseq [NM_002427](#)

Protein Refseq [NP_002418](#)

MIM [600108](#)

UniProt ID [P45452](#)

Gene ID [4322](#)

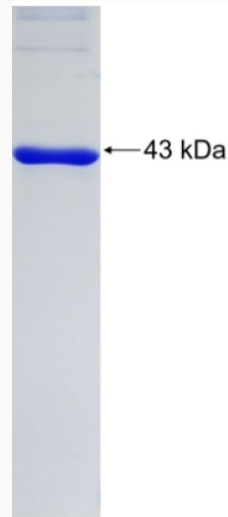
 Tel: 1-631-559-9269 1-516-512-3133

 Email: info@creative-biomart.com  Fax: 1-631-938-8127

 45-1 Ramsey Road, Shirley, NY 11967, USA



SDS-PAGE



Tel: 1-631-559-9269 1-516-512-3133

Email: info@creative-biomart.com Fax: 1-631-938-8127

45-1 Ramsey Road, Shirley, NY 11967, USA