

# Recombinant Full Length Human MMP14 Protein, C-Flag-tagged

**Cat. No.** MMP14-1787HFL    **Lot. No.** (See product label)

## SPECIFICATION

<b>Product Overview</b>	Recombinant Full Length Human MMP14 Protein, fused to Flag-tag at C-terminus, was expressed in Mammalian cells.
<b>Species</b>	Human
<b>Source</b>	Mammalian Cells
<b>Description</b>	<p>Proteins of the matrix metalloproteinase (MMP) family are involved in the breakdown of extracellular matrix in normal physiological processes, such as embryonic development, reproduction, and tissue remodeling, as well as in disease processes, such as arthritis and metastasis. Most MMP's are secreted as inactive proproteins which are activated when cleaved by extracellular proteinases. However, the protein encoded by this gene is a member of the membrane-type MMP (MT-MMP) subfamily; each member of this subfamily contains a potential transmembrane domain suggesting that these proteins are expressed at the cell surface rather than secreted. This protein activates MMP2 protein, and this activity may be involved in tumor invasion.</p>
<b>Form</b>	25 mM Tris HCl, pH 7.3, 100 mM glycine, 10% glycerol.
<b>Molecular Mass</b>	53.8 kDa
<b>AA Sequence</b>	MSPAPRPPRCLLLPLLTALASLGSAQSSSFPEAWLQQYGYLPPGDLRHTHTQR SPQSLSAIAIAMQK FYGLQVTGKADADTMKAMRRPRCGVPDKFGAEIKANVRRKR

 Tel: 1-631-559-9269    1-516-512-3133

 Email: [info@creative-biomart.com](mailto:info@creative-biomart.com)     Fax: 1-631-938-8127

 45-1 Ramsey Road, Shirley, NY 11967, USA

YAIQGLKWQHNEITFCIQNYTPKVGAYAT YEAIRKAFRVWESATPLRFREVPYAYIRE  
 GHEKQADIMIFFAEGFHGDSTPFDGEGGFLAHAYFPGPNIG GDTHFDSAEPWTVRN  
 EDLNGNDIFLVAVHELGHALGLEHSSDPSAIMAPFYQWMDTENFVLPDDDRRGIQ Q  
 LYGGESGFPTKMPPQPRRTSRPSVPDKPKNPTYGPNICDGNFDTVAMLRGEMFVF  
 KERWFWRVRNNQVM DGYPMPIGQFWRGLPASINTAYERKDGKFVFFKGDKHWVF  
 DEASLEPGYPKHIKELGRGLPTDKIDAALF WMPNGKTYFFRGNKYRFNEELRAVD  
 SEYPKNIKVWEGIPESPRGSFMGSDEVFTYFYKGNKYWKFNQK LKVEPGYPKSA  
 LRDWMGCPSGGRPDEGTEETEVIIEVDEEGGAVSAAAVVLPVLLLLLVAVGLA  
 VF FFRRHGTPRRLLYCQRSLLDKV TRTRPLEQKLISEEDLAANDILDYKDDDDKV

<b>Purity</b>	> 80% as determined by SDS-PAGE and Coomassie blue staining.
<b>Stability</b>	Stable for 12 months from the date of receipt of the product under proper storage and handling conditions. Avoid repeated freeze-thaw cycles.
<b>Storage</b>	Store at -80 centigrade.
<b>Concentration</b>	>50 ug/mL as determined by microplate BCA method.
<b>Preparation</b>	Recombinant protein was captured through anti-DDK affinity column followed by conventional chromatography steps.
<b>Protein Families</b>	Druggable Genome, Protease, Transmembrane
<b>Protein Pathways</b>	GnRH signaling pathway
<b>Full Length</b>	Full L.

## GENE INFORMATION

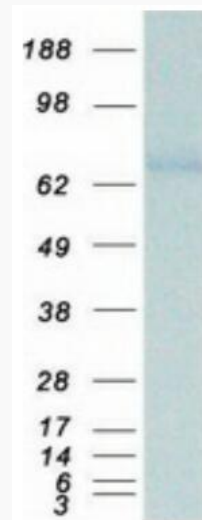
**Gene Name** [MMP14 matrix metalloproteinase 14 \[ Homo sapiens \(human\) \]](#)

 Tel: 1-631-559-9269 1-516-512-3133

 Email: [info@creative-biomart.com](mailto:info@creative-biomart.com)  Fax: 1-631-938-8127

 45-1 Ramsey Road, Shirley, NY 11967, USA

<b>Official Symbol</b>	MMP14
<b>Synonyms</b>	MMP-14; MMP-X1; MT-MMP; MT1MMP; MTMMP1; WNCHRS; MT1-MMP; MT-MMP 1
<b>Gene ID</b>	4323
<b>mRNA Refseq</b>	NM_004995.4
<b>Protein Refseq</b>	NP_004986.1
<b>MIM</b>	600754
<b>UniProt ID</b>	P50281



Coomassie blue staining of purified MMP14 protein.

 Tel: 1-631-559-9269 1-516-512-3133

 Email: [info@creative-biomart.com](mailto:info@creative-biomart.com)  Fax: 1-631-938-8127

 45-1 Ramsey Road, Shirley, NY 11967, USA