

Recombinant Human MMP14 Protein, His-tagged

Cat. No. MMP14-181H Lot. No. (See product label)

SPECIFICATION

Product Overview Recombinant Human MMP14(Tyr112~Gly321) fused with His tag at N-terminal was expressed in E. coli.

Species Human

Source E.coli

ProteinLength Tyr112~Gly321

Description Proteins of the matrix metalloproteinase (MMP) family are involved in the breakdown of extracellular matrix in normal physiological processes, such as embryonic development, reproduction, and tissue remodeling, as well as in disease processes, such as arthritis and metastasis. Most MMP's are secreted as inactive proproteins which are activated when cleaved by extracellular proteinases. However, the protein encoded by this gene is a member of the membrane-type MMP (MT-MMP) subfamily; each member of this subfamily contains a potential transmembrane domain suggesting that these proteins are expressed at the cell surface rather than secreted. This protein activates MMP2 protein, and this activity may be involved in tumor invasion.

Form 100mMNaHCO₃, 500mMNaCl, pH8.3, containing 1mM EDTA, 1mM DTT, 0.01% SKL, 5% Trehalose and Proclin300.

Molecular Mass 25.2kDa

 Tel: 1-631-559-9269 1-516-512-3133

 Email: info@creative-biomart.com  Fax: 1-631-938-8127

 45-1 Ramsey Road, Shirley, NY 11967, USA

Endotoxin	<1.0EU per 1ug (determined by the LAL method)
Purity	> 97%
Applications	Positive Control; Immunogen; SDS-PAGE; WB. If bio-activity of the protein is needed, please check active protein
Stability	The thermal stability is described by the loss rate. The loss rate was determined by accelerated thermal degradation test, that is, incubate the protein at 37 centigrade for 48h, and no obvious degradation and precipitation were observed. The loss rate is less than 5% within the expiration date under appropriate storage condition.
Storage	Avoid repeated freeze/thaw cycles. Store at 2-8 centigrade for one month. Aliquot and store at -80 centigrade for 12 months.
Reconstitution	Reconstitute in 100mM NaHCO ₃ , 500mM NaCl (pH8.3) to a concentration of 0.1-1.0 mg/mL. Do not vortex.

GENE INFORMATION

Gene Name	MMP14 matrix metalloproteinase 14 (membrane-inserted) [Homo sapiens]
Official Symbol	MMP14
Synonyms	MMP14; matrix metalloproteinase 14 (membrane-inserted); matrix metalloproteinase 14 (membrane inserted); matrix metalloproteinase-14; membrane type 1 metalloproteinase; MT1 MMP; membrane-type matrix metalloproteinase 1; membrane-type-1 matrix metalloproteinase; matrix metalloproteinase 14 (membrane-inserted); 1; MMP-14; MMP-X1; MT-MMP; MT1MMP; MTMMP1; MT1-MMP; MT-MMP 1;
Gene ID	4323

 Tel: 1-631-559-9269 1-516-512-3133

 Email: info@creative-biomart.com  Fax: 1-631-938-8127

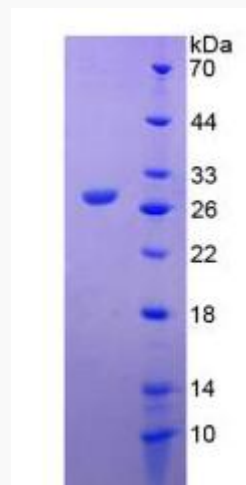
 45-1 Ramsey Road, Shirley, NY 11967, USA

mRNA Refseq [NM_004995](#)

Protein Refseq [NP_004986](#)

MIM [600754](#)

UniProt ID [P50281](#)



 Tel: 1-631-559-9269 1-516-512-3133

 Email: info@creative-biomart.com  Fax: 1-631-938-8127

 45-1 Ramsey Road, Shirley, NY 11967, USA