

Recombinant Human MMP14 Protein, GST-tagged

Cat. No. MMP14-5423H Lot. No. (See product label)

SPECIFICATION

Product Overview	Human MMP14 full-length ORF (AAH64803.1, 1 a.a. - 582 a.a.) recombinant protein with GST-tag at N-terminal.
Species	Human
Source	Wheat Germ
Description	<p>Proteins of the matrix metalloproteinase (MMP) family are involved in the breakdown of extracellular matrix in normal physiological processes, such as embryonic development, reproduction, and tissue remodeling, as well as in disease processes, such as arthritis and metastasis. Most MMPs are secreted as inactive proproteins which are activated when cleaved by extracellular proteinases. However, the protein encoded by this gene is a member of the membrane-type MMP (MT-MMP) subfamily; each member of this subfamily contains a potential transmembrane domain suggesting that these proteins are expressed at the cell surface rather than secreted. This protein activates MMP2 protein, and this activity may be involved in tumor invasion. [provided by RefSeq</p>
Molecular Mass	92.3 kDa
AA Sequence	<p>MSPAPRPSRCLLLPLLLTLGTALASLGSAQSSSFPEAWLQQYGYLPPGDLRHTHTQR SPQSLSAIIAAMQKFYGLQVTGKADATMKAMRRPRCGVPDKFGAEIKANVRRKRY AIQGLKWQHNEITFCIQNYTPKVGEYATYEAIRKAFRVWESATPLRFREVPYAYIREG HEKQADIMIFFAEGFHGDSTPFDGEGGFLAHAYFPGPNIGGDTHFDSAEPWTVRNE</p>

 Tel: 1-631-559-9269 1-516-512-3133

 Email: info@creative-biomart.com  Fax: 1-631-938-8127

 45-1 Ramsey Road, Shirley, NY 11967, USA

DLNGNDIFLVAVHELGHALGLEHSSDPSAIMAPFYQWMDTENFVLPDDDRRGIQQL
 YGGESGFPTKMPPQPRTTSRPSVPDKPKNPTYGPNICDGNFDTVAMLRGEMFVFK
 ERWFWRVRRNNQVMDGYPMPIGQFWRGLPASINTAYERKDGKVFVFFKGDKHWVFD
 EASLEPGYPKHIKELGRGLPTDKIDAALFWMPNGKTYFFRGNKYRFFNEELRAVDSE
 YPKNIKVWEGIPESPRGSFMGSDEVFTYFYKGNKYWKFNQKLVKVEPGYPKSALRD
 WMGCPSSGRPDGTEEETEVIIEVDEEGGGAVSAAAVLPLVLLLLLVAVGLAVFFF
 RRHGTPRRLLYCQRSLLDKV

Applications	Enzyme-linked Immunoabsorbent Assay Western Blot (Recombinant protein) Antibody Production Protein Array
---------------------	---

Notes	Best use within three months from the date of receipt of this protein.
--------------	--

Storage	Store at -80 centigrade. Aliquot to avoid repeated freezing and thawing.
----------------	--

Storage Buffer	50 mM Tris-HCl, 10 mM reduced Glutathione, pH=8.0 in the elution buffer.
-----------------------	--

GENE INFORMATION

Gene Name	MMP14 matrix metalloproteinase 14 (membrane-inserted) [Homo sapiens]
------------------	--

Official Symbol	MMP14
------------------------	-------

Synonyms	MMP14; matrix metalloproteinase 14 (membrane-inserted); matrix metalloproteinase 14 (membrane inserted); matrix metalloproteinase-14; membrane type 1 metalloproteinase; MT1 MMP; membrane-type matrix metalloproteinase 1; membrane-type-1 matrix metalloproteinase; matrix metalloproteinase 14 (membrane-inserted); 1; MMP-14; MMP-X1; MT-MMP; MT1MMP; MTMMP1; MT1-MMP; MT-MMP 1;
-----------------	--

 Tel: 1-631-559-9269 1-516-512-3133

 Email: info@creative-biomart.com  Fax: 1-631-938-8127

 45-1 Ramsey Road, Shirley, NY 11967, USA

Gene ID 4323

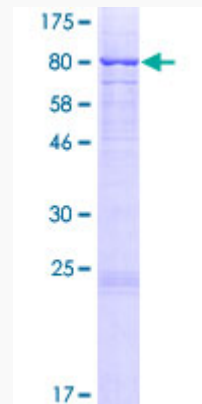
mRNA Refseq NM_004995

Protein Refseq NP_004986

MIM 600754

UniProt ID P50281

Quality Control
Testing:



12.5% SDS-PAGE Stained with Coomassie Blue.

Tel: 1-631-559-9269 1-516-512-3133

Email: info@creative-biomart.com Fax: 1-631-938-8127

45-1 Ramsey Road, Shirley, NY 11967, USA