

# Recombinant Human matrix metalloproteinase 14 (membrane-inserted) Protein, His-tagged

Cat. No. MMP14-813H Lot. No. (See product label)

## SPECIFICATION

<b>Product Overview</b>	Recombinant Human MMP14, Hemopexin Domain, His-tagged
<b>Species</b>	Human
<b>Source</b>	HEK293
<b>ProteinLength</b>	315-512 aa
<b>Description</b>	<p>Proteins of the matrix metalloproteinase (MMP) family are involved in the breakdown of extracellular matrix in normal physiological processes, such as embryonic development, reproduction, and tissue remodeling, as well as in disease processes, such as arthritis and metastasis. Most MMP's are secreted as inactive proproteins which are activated when cleaved by extracellular proteinases. However, the protein encoded by this gene is a member of the membrane-type MMP (MT-MMP) subfamily; each member of this subfamily contains a potential transmembrane domain suggesting that these proteins are expressed at the cell surface rather than secreted. This protein activates MMP2 protein, and this activity may be involved in tumor invasion.</p>
<b>Tag</b>	C-His
<b>Molecular Mass</b>	24 kDa
<b>AA Sequence</b>	GNPICDGNFDTVAMLRGEMFVKERWFWRVRNNQVMDGYPMPIGQFWRGLPASI

 Tel: 1-631-559-9269 1-516-512-3133

 Email: [info@creative-biomart.com](mailto:info@creative-biomart.com)  Fax: 1-631-938-8127

 45-1 Ramsey Road, Shirley, NY 11967, USA

NTAYERKDGKVFVFFKGDKHWVFDEASLEPGYPKHIKELGRGLPTDKIDAALFWMPN  
GKTYFFRGNKYRNFNEELRAVDSEYPKNIKVWEGIPESPRGSFMGSDEVFTYFYKG  
NKYWKFNNQKLKVEPGYPKSALRDWMGCPSGGVTHHHHHH

**Purity** > 90 % by SDS-PAGE

**Storage** Store it under sterile conditions at -20 to -80 centigrade. It is recommended that the protein be aliquoted for optimal storage. Avoid repeated freeze-thaw cycles.

**Concentration** 0.29 mg/mL by BCA

**Storage Buffer** Sterile PBS, pH 7.4.

## GENE INFORMATION

**Gene Name** [MMP14 matrix metalloproteinase 14 \(membrane-inserted\) \[Homo sapiens \(human\)\]](#)

**Official Symbol** [MMP14](#)

**Synonyms** MMP14; matrix metalloproteinase 14 (membrane-inserted); matrix metalloproteinase 14 (membrane inserted); matrix metalloproteinase-14; membrane type 1 metalloproteinase; MT1 MMP; membrane-type matrix metalloproteinase 1; membrane-type-1 matrix metalloproteinase; matrix metalloproteinase 14 (membrane-inserted); 1; MMP-14; MMP-X1; MT-MMP; MT1MMP; MTMMP1; MT1-MMP; MT-MMP 1

**Gene ID** [4323](#)

**mRNA Refseq** [NM\\_004995](#)

**Protein Refseq** [NP\\_004986](#)

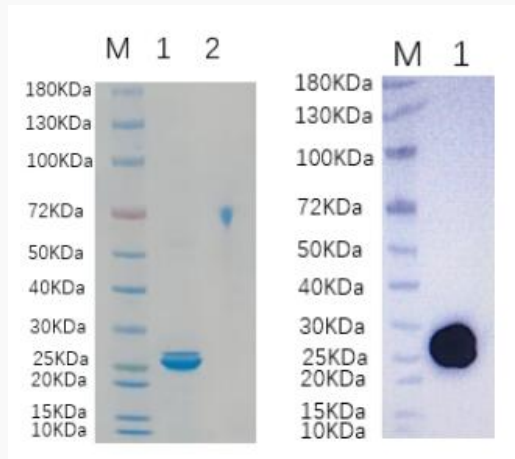
 Tel: 1-631-559-9269 1-516-512-3133

 Email: [info@creative-biomart.com](mailto:info@creative-biomart.com)  Fax: 1-631-938-8127

 45-1 Ramsey Road, Shirley, NY 11967, USA

**MIM** 600754**UniProt ID** P50281

**Reducing 4 %-20 %  
SDS-PAGE (CBB  
stained) and WB  
(Anti-His Mouse  
Monoclonal  
antibody) analysis  
profiles of purified  
MMP14.**



1. MMP14
2. BSA

 Tel: 1-631-559-9269 1-516-512-3133 Email: [info@creative-biomart.com](mailto:info@creative-biomart.com)  Fax: 1-631-938-8127 45-1 Ramsey Road, Shirley, NY 11967, USA