

Recombinant Human MMP15 Protein (His410-Leu553), N-His tagged

Cat. No. MMP15-4578H Lot. No. (See product label)

SPECIFICATION

Product Overview	Recombinant human MMP15 (His410-Leu553) fused with the N-His tag was expressed in E. coli.
Species	Human
Source	E.coli
ProteinLength	His410-Leu553
Form	Lyophilized powder/frozen liquid
Molecular Mass	19.43 kDa
Purity	>90% as determined by SDS-PAGE.
Notes	For research use only.
Storage	Use a manual defrost freezer and avoid repeated freeze thaw cycles. Store at 2 to 8 centigrade for one week. Store at -20 to -80 centigrade for twelve months from the date of receipt.
Storage Buffer	0.01M PBS, pH 7.4, 0.02% NLS
Reconstitution	Reconstitute in sterile water for a stock solution.

 Tel: 1-631-559-9269 1-516-512-3133

 Email: info@creative-biomart.com  Fax: 1-631-938-8127

 45-1 Ramsey Road, Shirley, NY 11967, USA

Shipping They are shipped out with dry ice/blue ice unless customers require otherwise.

GENE INFORMATION

Gene Name [MMP15 matrix metalloproteinase 15 \(membrane-inserted\) \[Homo sapiens \(human\) \]](#)

Official Symbol [MMP15](#)

Synonyms MMP15; matrix metalloproteinase 15 (membrane-inserted); matrix metalloproteinase 15 (membrane inserted); matrix metalloproteinase-15; MT2 MMP; MTMMP2; SMCP 2; MMP-15; MT2MMP; MT-MMP 2; membrane-type matrix metalloproteinase 2; membrane-type-2 matrix metalloproteinase; matrix metalloproteinase 15 (membrane-inserted); SMCP-2; MT2-MMP;

Gene ID [4324](#)

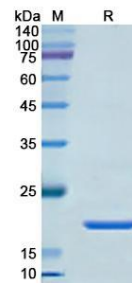
mRNA Refseq [NM_002428](#)

Protein Refseq [NP_002419](#)

MIM [602261](#)

UniProt ID [P51511](#)

SDS-PAGE



 Tel: 1-631-559-9269 1-516-512-3133

 Email: info@creative-biomart.com  Fax: 1-631-938-8127

 45-1 Ramsey Road, Shirley, NY 11967, USA