

Recombinant Human MMP15 Protein, His/GST-tagged

Cat. No. MMP15-459H Lot. No. (See product label)

SPECIFICATION

Product Overview	Recombinant Human MMP15(Phe280~Asp497) fused with His/GST tag at N-terminal was expressed in E. coli.
Species	Human
Source	E.coli
ProteinLength	Phe280~Asp497
Description	This gene encodes a member of the peptidase M10 family and membrane-type subfamily of matrix metalloproteinases (MMPs). Proteins in this family are involved in the breakdown of extracellular matrix in normal physiological processes, such as embryonic development, reproduction, and tissue remodeling, as well as in disease processes, such as arthritis and metastasis. Members of this subfamily contain a transmembrane domain suggesting that these proteins are expressed at the cell surface rather than secreted. The encoded preproprotein is proteolytically processed to generate the mature protease. This protein may play a role in cancer progression.
Form	PBS, pH7.4, containing 0.01% SKL, 1mM DTT, 5% Trehalose and Proclin300.
Molecular Mass	58.0kDa
Identity	Reconstitute in PBS or others
Endotoxin	<1.0EU per 1g (determined by the LAL method)

 Tel: 1-631-559-9269 1-516-512-3133

 Email: info@creative-biomart.com  Fax: 1-631-938-8127

 45-1 Ramsey Road, Shirley, NY 11967, USA

Purity	> 95%
Applications	Positive Control; Immunogen; SDS-PAGE; WB. If bio-activity of the protein is needed, please check active protein
Stability	The thermal stability is described by the loss rate. The loss rate was determined by accelerated thermal degradation test, that is, incubate the protein at 37 centigrade for 48h, and no obvious degradation and precipitation were observed. The loss rate is less than 5% within the expiration date under appropriate storage condition.
Storage	Avoid repeated freeze/thaw cycles. Store at 2-8 centigrade for one month. Aliquot and store at -80 centigrade for 12 months.
Reconstitution	Reconstitute in PBS or others

GENE INFORMATION

Gene Name	MMP15 matrix metalloproteinase 15 (membrane-inserted) [Homo sapiens]
Official Symbol	MMP15
Synonyms	MMP15; matrix metalloproteinase 15 (membrane-inserted); matrix metalloproteinase 15 (membrane inserted); matrix metalloproteinase-15; MT2 MMP; MTMMP2; SMCP 2; MMP-15; MT2MMP; MT-MMP 2; membrane-type matrix metalloproteinase 2; membrane-type-2 matrix metalloproteinase; matrix metalloproteinase 15 (membrane-inserted); SMCP-2; MT2-MMP;
Gene ID	4324
mRNA Refseq	NM_002428

 Tel: 1-631-559-9269 1-516-512-3133

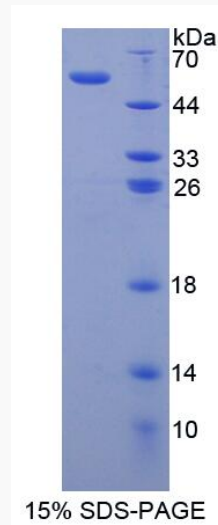
 Email: info@creative-biomart.com  Fax: 1-631-938-8127

 45-1 Ramsey Road, Shirley, NY 11967, USA

Protein Refseq NP_002419

MIM 602261

UniProt ID P51511



 Tel: 1-631-559-9269 1-516-512-3133

 Email: info@creative-biomart.com  Fax: 1-631-938-8127

 45-1 Ramsey Road, Shirley, NY 11967, USA