

Recombinant Human matrix metalloproteinase 2 Protein, His&Flag tagged

Cat. No. MMP2-095H Lot. No. (See product label)

SPECIFICATION

Product Overview	Recombinant human MMP2/CLG4A protein (P08253) (Ala 30-Cys 660) with both His, Flag tag at the C-terminus was expressed in HEK293.
Species	Human
Source	HEK293
ProteinLength	30-660aa
Description	Ubiquitous metalloproteinase that is involved in diverse functions such as remodeling of the vasculature, angiogenesis, tissue repair, tumor invasion, inflammation, and atherosclerotic plaque rupture. As well as degrading extracellular matrix proteins, can also act on several nonmatrix proteins such as big endothelial 1 and beta-type CGRP promoting vasoconstriction. Also cleaves KISS at a Gly- -Leu bond. Appears to have a role in myocardial cell death pathways. Contributes to myocardial oxidative stress by regulating the activity of GSK3beta. Cleaves GSK3beta in vitro. Involved in the formation of the fibrovascular tissues in association with MMP14. PEX, the C-terminal non-catalytic fragment of MMP2, possesses anti-angiogenic and anti-tumor properties and inhibits cell migration and cell adhesion to FGF2 and vitronectin. Ligand for integrin α v/ β 3 on the surface of blood vessels.
Tag	C-His&Flag
Molecular Mass	73.7 kDa

 Tel: 1-631-559-9269 1-516-512-3133

 Email: info@creative-biomart.com  Fax: 1-631-938-8127

 45-1 Ramsey Road, Shirley, NY 11967, USA

Endotoxin	Less than 1.0 EU/μg by the LAL method.
Purity	>95% as determined by SDS-PAGE.
Storage	Please avoid repeated freeze-thaw cycles. Samples are stable for up to twelve months from date of receipt at -20 to -80 centigrade. It is recommended that aliquot the reconstituted solution to minimize freeze-thaw cycles.
Storage Buffer	Lyophilized from a 0.2 μm filtered solution of PBS, pH7.4, 5% Trehalose, 5% mannitol.
Reconstitution	Reconstitute at 250 μg/mL in sterile water.

GENE INFORMATION

Gene Name	MMP2 matrix metalloproteinase 2 [Homo sapiens (human)]
Official Symbol	MMP2
Synonyms	MMP2; matrix metalloproteinase 2 (gelatinase A, 72kDa gelatinase, 72kDa type IV collagenase); CLG4, CLG4A, matrix metalloproteinase 2 (gelatinase A, 72kD gelatinase, 72kD type IV collagenase), matrix metalloproteinase 2 (gelatinase A, 72kDa gelatinase, 72kDa type IV collagenase); 72 kDa type IV collagenase; TBE 1; MMP-2; gelatinase A; 72 kDa gelatinase; collagenase type IV-A; neutrophil gelatinase; matrix metalloproteinase-2; matrix metalloproteinase-II; CLG4; MONA; CLG4A; TBE-1; MMP-II;
Gene ID	4313
mRNA Refseq	NM_001127891

 Tel: 1-631-559-9269 1-516-512-3133

 Email: info@creative-biomart.com  Fax: 1-631-938-8127

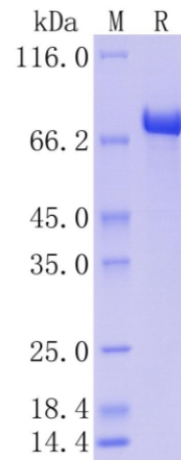
 45-1 Ramsey Road, Shirley, NY 11967, USA

Protein Refseq NP_001121363

MIM 120360

UniProt ID P08253

Protein on SDS-PAGE under reducing (R) condition.



 Tel: 1-631-559-9269 1-516-512-3133

 Email: info@creative-biomart.com  Fax: 1-631-938-8127

 45-1 Ramsey Road, Shirley, NY 11967, USA