

## Active Recombinant Human MMP2 protein, His-tagged

Cat. No. MMP2-1121H Lot. No. (See product label)

### SPECIFICATION

<b>Product Overview</b>	Active Recombinant Human MMP2 protein(P08253)(30~660 aa), fused with N-terminal His tag, was expressed in HEK293.
<b>Species</b>	Human
<b>Source</b>	HEK293
<b>ProteinLength</b>	30-660 aa
<b>Form</b>	Lyophilized from sterile PBS, pH7.4, containing 0.01% SKL, 1mM DTT, 5% Trehalose and Proclin300.
<b>Bio-activity</b>	MMP2 is a zinc-dependent enzymes capable of cleaving components of the extracellular matrix, which belongs to the matrix metalloproteinase (MMP) family .It is a gelatinase A, 72 kDa type IV collagenase which can hydrolyze gelatin under certain conditions. Gelatin zymography is mainly used for the detection of the gelatinases, MMP-2 and MMP-9 and It is extremely sensitive because levels of 10 pg of MMP-2 can already be detected .Brieflyvarious concentrations of MMP2 (50ng, 25ng, 13ng, 6.5ng, 3.3ng, 1.7ng) were denatured by SDS loading buffer, electrophoresed through sodium dodecylsulphate–polyacrylamide gel (SDS–PAGE; 10% gels) containing gelatin (1 mg/ml) with nonreducing conditions. After renaturation, incubation and CCB-stained, active MMP2 would hydrolyze gelatin nearby, which was indicated by the white binds on the gel. In this experiment we use trypsin as positive control.
<b>Molecular Mass</b>	72.6kDa

 Tel: 1-631-559-9269 1-516-512-3133

 Email: [info@creative-biomart.com](mailto:info@creative-biomart.com)  Fax: 1-631-938-8127

 45-1 Ramsey Road, Shirley, NY 11967, USA

<b>Endotoxin</b>	<1.0EU per 1µg (determined by the LAL method).
<b>Purity</b>	> 95% as determined by SDS-PAGE.
<b>Storage</b>	Avoid repeated freeze/thaw cycles. Store at -20°C for 12 months. Aliquot and store at -80°C for 12 months.
<b>Reconstitution</b>	Reconstitute in 10mM PBS (pH7.4) to a concentration of 0.1-1.0 mg/mL. Do not vortex.

## GENE INFORMATION

<b>Gene Name</b>	MMP2 matrix metalloproteinase 2 (gelatinase A, 72kDa gelatinase, 72kDa type IV collagenase) [ Homo sapiens ]
<b>Official Symbol</b>	<a href="#">MMP2</a>
<b>Synonyms</b>	MMP2; matrix metalloproteinase 2 (gelatinase A, 72kDa gelatinase, 72kDa type IV collagenase); CLG4, CLG4A, matrix metalloproteinase 2 (gelatinase A, 72kD gelatinase, 72kD type IV collagenase), matrix metalloproteinase 2 (gelatinase A, 72kDa gelatinase, 72kDa type IV collagenase); 72 kDa type IV collagenase; TBE 1; MMP-2; gelatinase A; 72 kDa gelatinase; collagenase type IV-A; neutrophil gelatinase; matrix metalloproteinase-2; matrix metalloproteinase-II; CLG4; MONA; CLG4A; TBE-1; MMP-II;
<b>Gene ID</b>	<a href="#">4313</a>
<b>mRNA Refseq</b>	<a href="#">NM_001127891</a>
<b>Protein Refseq</b>	<a href="#">NP_001121363</a>

 Tel: 1-631-559-9269 1-516-512-3133

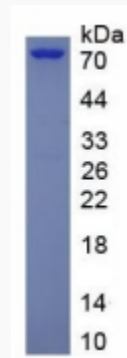
 Email: [info@creative-biomart.com](mailto:info@creative-biomart.com)  Fax: 1-631-938-8127

 45-1 Ramsey Road, Shirley, NY 11967, USA

**MIM** 120360

**UniProt ID** P08253

**SDS-PAGE**



 Tel: 1-631-559-9269 1-516-512-3133

 Email: [info@creative-biomart.com](mailto:info@creative-biomart.com)  Fax: 1-631-938-8127

 45-1 Ramsey Road, Shirley, NY 11967, USA