

Active Recombinant Human MMP2 protein

Cat. No. MMP2-201H Lot. No. (See product label)

SPECIFICATION

| | |
|-------------------------|--|
| Product Overview | Recombinant Human MMP2 was expressed in E. coli. |
| Species | Human |
| Source | E.coli |
| Description | MMP-2 belongs to a family of endoproteases which need calcium and zinc in order to exert their catalytic capability (extracellular matrix remodeling). The elevated expression of these enzymes has been linked to many degenerative disorders, such as arthritis, cancer metastasis and skeletal growth-plate disorders. It has been shown that MMP-2 associates with many connective tissue cells as well as neutrophils, macrophages and monocytes. |
| Form | Supplied as a 0.2 µm filtered solution in Tris, CaCl ₂ , NaCl and Brij35 |
| Bio-activity | The ED (50) was determined by the dose-dependent proliferation of immortalized human pulmonary fibroblasts cells and was found to be <0.05ng/mL. |
| Molecular Mass | 62.0 kDa |
| Endotoxin | <1.0 EU/µg of recombinant protein as determined by the LAL method. |
| Purity | 95% |
| Applications | Cell Assay |

 Tel: 1-631-559-9269 1-516-512-3133

 Email: info@creative-biomart.com  Fax: 1-631-938-8127

 45-1 Ramsey Road, Shirley, NY 11967, USA

Storage

The lyophilized protein is stable for at least one year from date of receipt at -70 centigrade. Upon reconstitution, this cytokine can be stored in working aliquots at 2 centigrade- 8 centigrade for one month, or at -20 centigrade for six months, with a carrier protein without detectable loss of activity. Avoid repeated freeze/thaw cycles.

GENE INFORMATION
Gene Name

MMP2 matrix metalloproteinase 2 (gelatinase A, 72kDa gelatinase, 72kDa type IV collagenase) [Homo sapiens]

Official Symbol

MMP2

Synonyms

MMP2; matrix metalloproteinase 2 (gelatinase A, 72kDa gelatinase, 72kDa type IV collagenase); CLG4, CLG4A, matrix metalloproteinase 2 (gelatinase A, 72kD gelatinase, 72kD type IV collagenase) , matrix metalloproteinase 2 (gelatinase A, 72kDa gelatinase, 72kDa type IV collagenase); 72 kDa type IV collagenase; TBE 1; MMP-2; gelatinase A; 72 kDa gelatinase; collagenase type IV-A; neutrophil gelatinase; matrix metalloproteinase-2; matrix metalloproteinase-II; CLG4; MONA; CLG4A; TBE-1; MMP-II;

Gene ID

4313

mRNA Refseq

NM_001127891

Protein Refseq

NP_001121363

MIM

120360

UniProt ID

P08253

Chromosome

16q13-q21

 Tel: 1-631-559-9269 1-516-512-3133

 Email: info@creative-biomart.com  Fax: 1-631-938-8127

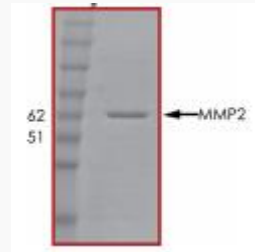
 45-1 Ramsey Road, Shirley, NY 11967, USA

Location**Pathway**

ATF-2 transcription factor network, organism-specific biosystem; Activation of Matrix Metalloproteinases, organism-specific biosystem; Angiotensin receptor Tie2-mediated signaling, organism-specific biosystem; Bladder cancer, organism-specific biosystem; Bladder cancer, conserved biosystem; Degradation of the extracellular matrix, organism-specific biosystem; Diabetes pathways, organism-specific biosystem;

Function

metal ion binding; metalloendopeptidase activity; peptidase activity; zinc ion binding;



 Tel: 1-631-559-9269 1-516-512-3133

 Email: info@creative-biomart.com  Fax: 1-631-938-8127

 45-1 Ramsey Road, Shirley, NY 11967, USA