

Recombinant Human MMP2 Protein (Ala30-Cys660), C-His tagged

Cat. No. MMP2-4562H Lot. No. (See product label)

SPECIFICATION

Product Overview	Recombinant human MMP2 (Ala30-Cys660) fused with the C-terminal His tag was expressed in Mammalian cells.
Species	Human
Source	Mammalian Cells
ProteinLength	Ala30-Cys660
Form	Lyophilized powder/frozen liquid
Molecular Mass	69.41 kDa
Purity	>90% as determined by SDS-PAGE.
Notes	For research use only.
Storage	Use a manual defrost freezer and avoid repeated freeze thaw cycles. Store at 2 to 8 centigrade for one week. Store at -20 to -80 centigrade for twelve months from the date of receipt.
Storage Buffer	Lyophilized from PBS, pH 7.4, 1mM EDTA, 4% trehalose, 1% mannitol.
Reconstitution	Reconstitute in sterile water for a stock solution.

 Tel: 1-631-559-9269 1-516-512-3133

 Email: info@creative-biomart.com  Fax: 1-631-938-8127

 45-1 Ramsey Road, Shirley, NY 11967, USA

Shipping They are shipped out with dry ice/blue ice unless customers require otherwise.

GENE INFORMATION

Gene Name MMP2 matrix metallopeptidase 2 (gelatinase A, 72kDa gelatinase, 72kDa type IV collagenase) [Homo sapiens (human)]

Official Symbol MMP2

Synonyms MMP2; matrix metallopeptidase 2 (gelatinase A, 72kDa gelatinase, 72kDa type IV collagenase); CLG4, CLG4A, matrix metalloproteinase 2 (gelatinase A, 72kD gelatinase, 72kD type IV collagenase), matrix metalloproteinase 2 (gelatinase A, 72kDa gelatinase, 72kDa type IV collagenase); 72 kDa type IV collagenase; TBE 1; MMP-2; gelatinase A; 72 kDa gelatinase; collagenase type IV-A; neutrophil gelatinase; matrix metalloproteinase-2; matrix metalloproteinase-II; CLG4; MONA; CLG4A; TBE-1; MMP-II;

Gene ID 4313

mRNA Refseq NM_001127891

Protein Refseq NP_001121363

MIM 120360

UniProt ID P08253

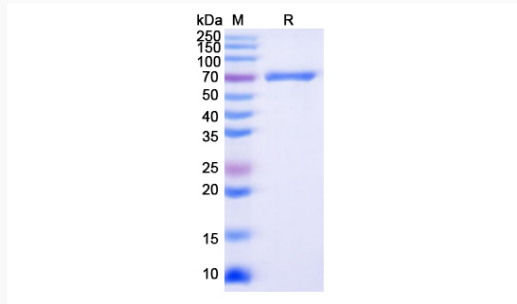
 Tel: 1-631-559-9269 1-516-512-3133

 Email: info@creative-biomart.com  Fax: 1-631-938-8127

 45-1 Ramsey Road, Shirley, NY 11967, USA



SDS-PAGE



Tel: 1-631-559-9269 1-516-512-3133

Email: info@creative-biomart.com Fax: 1-631-938-8127

45-1 Ramsey Road, Shirley, NY 11967, USA