

## Active Recombinant Human MMP2 protein

Cat. No. MMP2-889H Lot. No. (See product label)

### SPECIFICATION

|                         |   |
|-------------------------|---|
| <b>Product Overview</b> | Active Recombinant Human MMP2 protein(NP_004521.1) (Met 1-Cys 660) was expressed and purified in Human Cells.   |
| <b>Species</b>          | Human   |
| <b>Source</b>           | Human Cells   |
| <b>ProteinLength</b>    | 1-660 aa  |
| <b>Form</b>             | Lyophilized from sterile 0.05 % Brij-35, 150 mM NaCl, 5 mM CaCl <sub>2</sub> , 50 mM Tris, pH 7.5.  |
| <b>Bio-activity</b>     | 1. Measured by its ability to cleave the fluorogenic peptide substrate Mca-PLGL-Dpa-AR-NH <sub>2</sub> . The specific activity is > 1,000 pmoles/min/μg. 2. Measured by its binding ability in a functional ELISA. 3. Immobilized human MMP2 at 10 μg/mL (100 μl/well) can bind human TIMP2/Fc. The EC <sub>50</sub> of human TIMP2/Fc is 0.02 μg/mL. |
| <b>Molecular Mass</b>   | The recombinant human MMP2 consists of 631 amino acids and migrates as an 72 kDa band as predicted in SDS-PAGE under reducing conditions.   |
| <b>Endotoxin</b>        | < 1.0 EU per μg of the protein as determined by the LAL method.   |
| <b>Purity</b>           | > (74.7+17.3) % as determined by SDS-PAGE   |
| <b>Storage</b>          | Store it under sterile conditions at -20°C to -80°C upon receiving. Recommend to  |

 Tel: 1-631-559-9269 1-516-512-3133

 Email: [info@creative-biomart.com](mailto:info@creative-biomart.com)  Fax: 1-631-938-8127

 45-1 Ramsey Road, Shirley, NY 11967, USA

aliquot the protein into smaller quantities for optimal storage. Avoid repeated freeze-thaw cycles.

**Reconstitution**

It is recommended that sterile water be added to the vial to prepare a stock solution of 0.2 ug/ul. Centrifuge the vial at 4°C before opening to recover the entire contents.

## GENE INFORMATION

**Gene Name**

MMP2 matrix metalloproteinase 2 (gelatinase A, 72kDa gelatinase, 72kDa type IV collagenase) [ Homo sapiens ]

**Official Symbol**

MMP2

**Synonyms**

MMP2; matrix metalloproteinase 2 (gelatinase A, 72kDa gelatinase, 72kDa type IV collagenase); CLG4, CLG4A, matrix metalloproteinase 2 (gelatinase A, 72kD gelatinase, 72kD type IV collagenase), matrix metalloproteinase 2 (gelatinase A, 72kDa gelatinase, 72kDa type IV collagenase); 72 kDa type IV collagenase; TBE 1; MMP-2; gelatinase A; 72 kDa gelatinase; collagenase type IV-A; neutrophil gelatinase; matrix metalloproteinase-2; matrix metalloproteinase-II; CLG4; MONA; CLG4A; TBE-1; MMP-II;

**Gene ID**

4313

**mRNA Refseq**

NM\_001127891

**Protein Refseq**

NP\_001121363

**MIM**

120360

**UniProt ID**

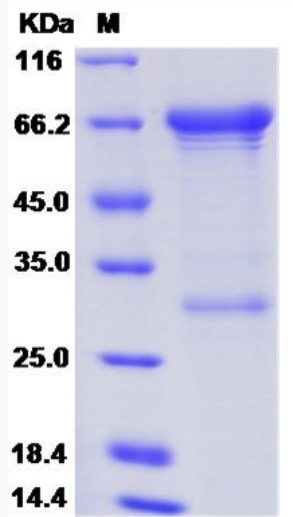
P08253

 Tel: 1-631-559-9269 1-516-512-3133

 Email: [info@creative-biomart.com](mailto:info@creative-biomart.com)  Fax: 1-631-938-8127

 45-1 Ramsey Road, Shirley, NY 11967, USA

SDS-PAGE



 Tel: 1-631-559-9269 1-516-512-3133

 Email: [info@creative-biomart.com](mailto:info@creative-biomart.com)  Fax: 1-631-938-8127

 45-1 Ramsey Road, Shirley, NY 11967, USA