

Recombinant Human MMP21 protein, His & T7-tagged

Cat. No. MMP21-1882H Lot. No. (See product label)

SPECIFICATION

| | |
|-------------------------|---|
| Product Overview | Recombinant Human MMP21 aa. (Thr335~Phe547 (Accession # Q8N119)) fused with N-terminal His & T7 tag was produced in E. coli cells. |
| Species | Human |
| Source | E.coli |
| ProteinLength | Thr335~Phe547 |
| Description | This gene encodes a member of the matrix metalloproteinase family. Proteins in this family are involved in the breakdown of extracellular matrix for both normal physiological processes, such as embryonic development, reproduction, and tissue remodeling, and disease processes, such as asthma and tumor metastasis. The encoded protein may play an important role in embryogenesis, particularly in neuronal cells, as well as in lymphocyte development and survival. |
| Form | Freeze-dried powder |
| Molecular Mass | Predicted Molecular Mass: 29.5kDa. |
| Endotoxin | <1.0EU per 1ug (determined by the LAL method) |
| Purity | >90% |
| Characteristic | The isoelectric point is 9.2. |

 Tel: 1-631-559-9269 1-516-512-3133

 Email: info@creative-biomart.com  Fax: 1-631-938-8127

 45-1 Ramsey Road, Shirley, NY 11967, USA

| | |
|-----------------------|---|
| Applications | SDS-PAGE; WB; ELISA; IP. |
| Stability | The thermal stability is described by the loss rate of the target protein. The loss rate was determined by accelerated thermal degradation test, that is, incubate the protein at 37°C for 48h, and no obvious degradation and precipitation were observed. (Referring from China Biological Products Standard, which was calculated by the Arrhenius equation.) The loss of this protein is less than 5% within the expiration date under appropriate storage condition. |
| Storage | Avoid repeated freeze/thaw cycles. Store at 2-8°C for one month. Aliquot and store at -80°C for 12 months. |
| Storage Buffer | Supplied as lyophilized form in PBS, pH7.4, containing 5% trehalose, 0.01% sarcosyl. |
| Reconstitution | Reconstitute in sterile PBS, pH7.2-pH7.4. |

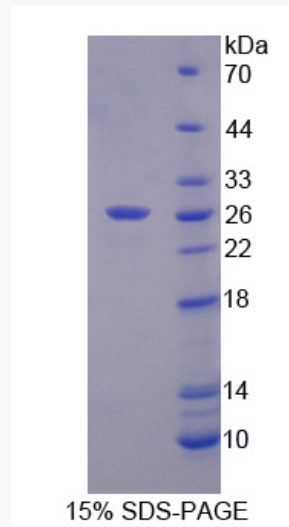
GENE INFORMATION

| | |
|------------------------|---|
| Gene Name | MMP21 matrix metalloproteinase 21 [Homo sapiens (human)] |
| Official Symbol | MMP21 |
| Synonyms | IL17re; interleukin 17 receptor E; interleukin-17 receptor E; IL-17 receptor E; IL-17RE |
| Gene ID | 118856 |
| mRNA Refseq | NM_147191.1 |
| Protein Refseq | NP_671724.1 |
| UniProt ID | Q8N119 |

 Tel: 1-631-559-9269 1-516-512-3133

 Email: info@creative-biomart.com  Fax: 1-631-938-8127

 45-1 Ramsey Road, Shirley, NY 11967, USA



SDS-PAGE

Tel: 1-631-559-9269 1-516-512-3133

Email: info@creative-biomart.com Fax: 1-631-938-8127

45-1 Ramsey Road, Shirley, NY 11967, USA