

## Recombinant Human MMP21 Protein, GST-tagged

Cat. No. MMP21-5427H Lot. No. (See product label)

### SPECIFICATION

<b>Product Overview</b>	Human MMP21 partial ORF ( NP_671724.1, 374 a.a. - 481 a.a.) recombinant protein with GST-tag at N-terminal.
<b>Species</b>	Human
<b>Source</b>	Wheat Germ
<b>Description</b>	This gene encodes a member of the matrix metalloproteinase family. Proteins in this family are involved in the breakdown of extracellular matrix for both normal physiological processes, such as embryonic development, reproduction, and tissue remodeling, and disease processes, such as asthma and metastasis. The encoded protein may play an important role in embryogenesis, particularly in neuronal cells, as well as in lymphocyte development and survival. [provided by RefSeq]
<b>Molecular Mass</b>	37.62 kDa
<b>AA Sequence</b>	TRYGDPIQILTGWPGIPTHNIDAFVHIWTWKRDERYFFQGNQYWRYSDDKQALTE DEQGKSYPKLISEGFPGIPSLDTAFYDRRQKLIYFFKESLVFAFDVNRNRV
<b>Applications</b>	Enzyme-linked Immunoabsorbent Assay Western Blot (Recombinant protein) Antibody Production Protein Array
<b>Notes</b>	Best use within three months from the date of receipt of this protein.

 Tel: 1-631-559-9269 1-516-512-3133

 Email: [info@creative-biomart.com](mailto:info@creative-biomart.com)  Fax: 1-631-938-8127

 45-1 Ramsey Road, Shirley, NY 11967, USA

**Storage** Store at -80 centigrade. Aliquot to avoid repeated freezing and thawing.

**Storage Buffer** 50 mM Tris-HCl, 10 mM reduced Glutathione, pH=8.0 in the elution buffer.

## GENE INFORMATION

**Gene Name** [MMP21 matrix metalloproteinase 21 \[ Homo sapiens \]](#)

**Official Symbol** [MMP21](#)

**Synonyms** MMP21; matrix metalloproteinase 21; matrix metalloproteinase 21; matrix metalloproteinase-21; MMP-21;

**Gene ID** [118856](#)

**mRNA Refseq** [NM\\_147191](#)

**Protein Refseq** [NP\\_671724](#)

**MIM** [608416](#)

**UniProt ID** [Q8N119](#)

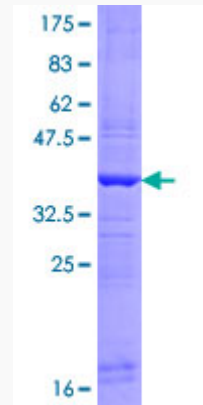
 Tel: 1-631-559-9269 1-516-512-3133

 Email: [info@creative-biomart.com](mailto:info@creative-biomart.com)  Fax: 1-631-938-8127

 45-1 Ramsey Road, Shirley, NY 11967, USA

**Quality Control**

**Testing:**



12.5% SDS-PAGE Stained with Coomassie Blue.

 Tel: 1-631-559-9269 1-516-512-3133

 Email: [info@creative-biomart.com](mailto:info@creative-biomart.com)  Fax: 1-631-938-8127

 45-1 Ramsey Road, Shirley, NY 11967, USA