

Recombinant Human MMP24 Protein (Ile429-Gln642), N-His tagged

Cat. No. MMP24-3942H Lot. No. (See product label)

SPECIFICATION

| | |
|-------------------------|---|
| Product Overview | Recombinant human MMP24 (Ile429-Gln642) fused with the N-His tag was expressed in E. coli. |
| Species | Human |
| Source | E.coli |
| ProteinLength | Ile429-Gln642 |
| Form | Lyophilized powder/frozen liquid |
| Molecular Mass | 27.30 kDa |
| Purity | >90% as determined by SDS-PAGE. |
| Notes | For research use only. |
| Storage | Use a manual defrost freezer and avoid repeated freeze thaw cycles. Store at 2 to 8 centigrade for one week. Store at -20 to -80 centigrade for twelve months from the date of receipt. |
| Storage Buffer | 0.01M PBS, pH 7.4, 0.02% NLS |
| Reconstitution | Reconstitute in sterile water for a stock solution. |

 Tel: 1-631-559-9269 1-516-512-3133

 Email: info@creative-biomart.com  Fax: 1-631-938-8127

 45-1 Ramsey Road, Shirley, NY 11967, USA

Shipping They are shipped out with dry ice/blue ice unless customers require otherwise.

GENE INFORMATION

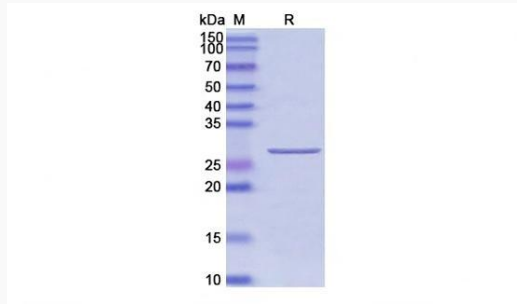
| | |
|------------------------|--|
| Gene Name | MMP24 matrix metalloproteinase 24 (membrane-inserted) [Homo sapiens (human)] |
| Official Symbol | MMP24 |
| Synonyms | MMP24; matrix metalloproteinase 24 (membrane-inserted); matrix metalloproteinase 24 (membrane inserted); matrix metalloproteinase-24; membrane type 5 matrix metalloproteinase; MT5 MMP; MMP-24; MT5MMP; MTMMP5; MT-MMP 5; membrane-type 5 matrix metalloproteinase; membrane-type matrix metalloproteinase 5; membrane-type-5 matrix metalloproteinase; matrix metalloproteinase 24 (membrane-inserted); MMP25; MT-MMP5; MT5-MMP; |
| Gene ID | 10893 |
| mRNA Refseq | NM_006690 |
| Protein Refseq | NP_006681 |
| MIM | 604871 |
| UniProt ID | Q9Y5R2 |

 Tel: 1-631-559-9269 1-516-512-3133

 Email: info@creative-biomart.com  Fax: 1-631-938-8127

 45-1 Ramsey Road, Shirley, NY 11967, USA

SDS-PAGE



 Tel: 1-631-559-9269 1-516-512-3133

 Email: info@creative-biomart.com  Fax: 1-631-938-8127

 45-1 Ramsey Road, Shirley, NY 11967, USA