

Recombinant Human MMP26 Protein, GST-tagged

Cat. No. MMP26-5430H Lot. No. (See product label)

SPECIFICATION

| | |
|-------------------------|--|
| Product Overview | Human MMP26 partial ORF (NP_068573, 152 a.a. - 261 a.a.) recombinant protein with GST-tag at N-terminal. |
| Species | Human |
| Source | Wheat Germ |
| Description | <p>Proteins of the matrix metalloproteinase (MMP) family are involved in the breakdown of extracellular matrix in normal physiological processes, such as embryonic development, reproduction, and tissue remodeling, as well as in disease processes, such as arthritis and metastasis. Most MMPs are secreted as inactive proproteins which are activated when cleaved by extracellular proteinases. The encoded protein degrades type IV collagen, fibronectin, fibrinogen, casein, vitronectin, alpha 1-antitrypsin, alpha 2-macroglobulin, and insulin-like growth factor-binding protein 1, and activates MMP9 by cleavage. The protein differs from most MMP family members in that it lacks a conserved C-terminal protein domain. [provided by RefSeq</p> |
| Molecular Mass | 37.84 kDa |
| AA Sequence | SFWQWAHEDGWPFDPGGILGHAFLPNSGNPGVVHFDKNEHWSASDTGYNLFLV ATHEIGHSLGLQHSGNQSSIMYPTYWYHDPRTFQLSADDIQRHQHLYGEKCSSDIP |
| Applications | <p>Enzyme-linked Immunoabsorbent Assay</p> <p>Western Blot (Recombinant protein)</p> <p>Antibody Production</p> |

 Tel: 1-631-559-9269 1-516-512-3133

 Email: info@creative-biomart.com  Fax: 1-631-938-8127

 45-1 Ramsey Road, Shirley, NY 11967, USA

Protein Array

| | |
|-----------------------|--|
| Notes | Best use within three months from the date of receipt of this protein. |
| Storage | Store at -80 centigrade. Aliquot to avoid repeated freezing and thawing. |
| Storage Buffer | 50 mM Tris-HCl, 10 mM reduced Glutathione, pH=8.0 in the elution buffer. |

GENE INFORMATION

| | |
|------------------------|---|
| Gene Name | MMP26 matrix metalloproteinase 26 [Homo sapiens] |
| Official Symbol | MMP26 |
| Synonyms | MMP26; matrix metalloproteinase 26; matrix metalloproteinase 26; matrix metalloproteinase-26; endometase; matrilysin 2; MGC126590; MGC126592; MMP-26; matrilysin-2; |
| Gene ID | 56547 |
| mRNA Refseq | NM_021801 |
| Protein Refseq | NP_068573 |
| MIM | 605470 |
| UniProt ID | Q9NRE1 |

 Tel: 1-631-559-9269 1-516-512-3133

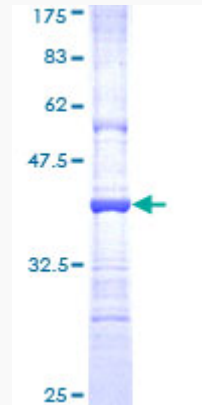
 Email: info@creative-biomart.com  Fax: 1-631-938-8127

 45-1 Ramsey Road, Shirley, NY 11967, USA



Quality Control

Testing:



12.5% SDS-PAGE Stained with Coomassie Blue.

Tel: 1-631-559-9269 1-516-512-3133

Email: info@creative-biomart.com Fax: 1-631-938-8127

45-1 Ramsey Road, Shirley, NY 11967, USA