

Active Recombinant Human MMP3 protein

Cat. No. MMP3-197H Lot. No. (See product label)

SPECIFICATION

Product Overview	Active Recombinant Human MMP3 protein(AAA36321.1)(Tyr 18-Thr 272) was expressed and purified in E. coli.
Species	Human
Source	E. coli
ProteinLength	18-272 aa
Form	Lyophilized from sterile 50mM Tris, 10mM CaCL ₂ , 1uM ZnCL ₂ , 50mM NaCl, 0.5% Brij35, pH 7.0.
Bio-activity	Measured by its ability to cleave the fluorogenic peptide substrate, Mca-RPKPVE-Nva-WR-K(Dnp)-NH ₂ . The specific activity is >300 pmoles/min/μg.
Molecular Mass	The recombinant human MMP3 consisting of 256 amino acids and has a calculated molecular mass of 29 KDa. It migrates as an approximately 34 KDa band in SDS-PAGE under reducing conditions.
Purity	> 97 % as determined by SDS-PAGE
Storage	Store it under sterile conditions at -20°C to -80°C upon receiving. Recommend to aliquot the protein into smaller quantities for optimal storage. Avoid repeated freeze-thaw cycles.

 Tel: 1-631-559-9269 1-516-512-3133

 Email: info@creative-biomart.com  Fax: 1-631-938-8127

 45-1 Ramsey Road, Shirley, NY 11967, USA

Reconstitution It is recommended that sterile water be added to the vial to prepare a stock solution of 0.2 ug/ul. Centrifuge the vial at 4°C before opening to recover the entire contents.

GENE INFORMATION

Gene Name [MMP3 matrix metalloproteinase 3 \(stromelysin 1, progelatinase\) \[Homo sapiens \]](#)

Official Symbol [MMP3](#)

Synonyms MMP3; matrix metalloproteinase 3 (stromelysin 1, progelatinase); matrix metalloproteinase 3 (stromelysin 1, progelatinase) , STMY, STMY1; stromelysin-1; transin-1; proteoglycanase; matrix metalloproteinase-3; matrix metalloproteinase 3 (stromelysin 1, progelatinase); SL-1; STMY; STR1; CHDS6; MMP-3; STMY1; MGC126102; MGC126103; MGC126104;

Gene ID [4314](#)

mRNA Refseq [NM_002422](#)

Protein Refseq [NP_002413](#)

MIM [185250](#)

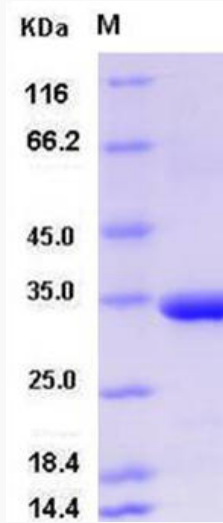
UniProt ID [P08254](#)

 Tel: 1-631-559-9269 1-516-512-3133

 Email: info@creative-biomart.com  Fax: 1-631-938-8127

 45-1 Ramsey Road, Shirley, NY 11967, USA

SDS-PAGE



 Tel: 1-631-559-9269 1-516-512-3133

 Email: info@creative-biomart.com  Fax: 1-631-938-8127

 45-1 Ramsey Road, Shirley, NY 11967, USA