

Recombinant Cattle MMP3 protein, His & T7-tagged

Cat. No. MMP3-739C Lot. No. (See product label)

SPECIFICATION

Product Overview	Recombinant Cattle MMP3 aa. (Tyr18~Cys477) fused with N-terminal His & T7 tag was produced in E. coli cells.
Species	Cattle
Source	E.coli
ProteinLength	Tyr18~Cys477
Form	Freeze-dried powder
Molecular Mass	Predicted Molecular Mass: 56.3kDa
Endotoxin	<1.0EU per 1g (determined by the LAL method)
Purity	>98%
Characteristic	The isoelectric point is 5.3.
Applications	SDS-PAGE; WB; ELISA; IP.
Stability	The thermal stability is described by the loss rate. The loss rate was determined by accelerated thermal degradation test, that is, incubate the protein at 37°C for 48h, and no obvious degradation and precipitation were observed. The loss rate is less than 5% within the expiration date under appropriate storage condition.

 Tel: 1-631-559-9269 1-516-512-3133

 Email: info@creative-biomart.com  Fax: 1-631-938-8127

 45-1 Ramsey Road, Shirley, NY 11967, USA

Storage	Avoid repeated freeze/thaw cycles. Store at 2-8°C for one month. Aliquot and store at -80°C for 12 months.
----------------	--

Storage buffer	Supplied as lyophilized form in 20mM Tris, 150mM NaCl, pH8.0, containing 1mM EDTA, 1mM DTT, 0.01% sarcosyl, 5% trehalose, and preservative
-----------------------	--

Reconstitution	Reconstitute in sterile ddH ₂ O.
-----------------------	---

GENE INFORMATION

Gene Name	MMP3 matrix metalloproteinase 3 [<i>Bos taurus</i> (cattle)]
------------------	--

Official Symbol	MMP3
------------------------	------

Synonyms	matrix metalloproteinase 3 (stromelysin 1, progelatinase); metalloproteinase 3 receptor; stromelysin-1
-----------------	--

Gene ID	281309
----------------	--------

mRNA Refseq	NM_001206637.1
--------------------	----------------

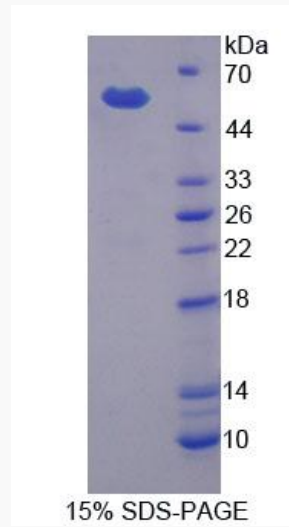
Protein Refseq	NP_001193566.1
-----------------------	----------------

 Tel: 1-631-559-9269 1-516-512-3133

 Email: info@creative-biomart.com  Fax: 1-631-938-8127

 45-1 Ramsey Road, Shirley, NY 11967, USA

SDS-PAGE



 Tel: 1-631-559-9269 1-516-512-3133

 Email: info@creative-biomart.com  Fax: 1-631-938-8127

 45-1 Ramsey Road, Shirley, NY 11967, USA