

Recombinant Full Length Human MMP3 Protein, C-Flag-tagged

Cat. No. MMP3-890HFL Lot. No. (See product label)

SPECIFICATION

Product Overview	Recombinant Full Length Human MMP3 Protein, fused to Flag-tag at C-terminus, was expressed in Mammalian cells.
Species	Human
Source	Mammalian Cells
Description	Proteins of the matrix metalloproteinase (MMP) family are involved in the breakdown of extracellular matrix in normal physiological processes, such as embryonic development, reproduction, and tissue remodeling, as well as in disease processes, such as arthritis and metastasis. Most MMP's are secreted as inactive proproteins which are activated when cleaved by extracellular proteinases. This gene encodes an enzyme which degrades fibronectin, laminin, collagens III, IV, IX, and X, and cartilage proteoglycans. The enzyme is thought to be involved in wound repair, progression of atherosclerosis, and tumor initiation. The gene is part of a cluster of MMP genes which localize to chromosome 11q22.3.
Form	25 mM Tris HCl, pH 7.3, 100 mM glycine, 10% glycerol.
Molecular Mass	52.2 kDa
AA Sequence	MKSLPILLLLCVAVCSAYPLDGAARGEDTSMNLVQKYLENYYDLEKDKQFVRRKDS GPVVKKIREMQKF LGLEVTGKLDSDTLEVMRKPRCGVPDVGHFRTFPGIPKWRKTH LTYRIVNYTPDLPKDAVDSAVEKALKV WEEVTPLTFSRLYEGEADIMISFAVREHGD FYFPDGPGNVLAHAYAPGPGINGDAHFDDEQWTKDTTGT NLFLVAAHEIGHSLGL

 Tel: 1-631-559-9269 1-516-512-3133

 Email: info@creative-biomart.com  Fax: 1-631-938-8127

 45-1 Ramsey Road, Shirley, NY 11967, USA

FHSANTEALMYPLYHSLDLTRFRLSQDDINGIQSLYGPPDSPETPLVPTEPV PPE
 PGTPANCDPALSFDAVSTLRGEILIFKDRHFWRKSLRKLEPELHLISSFWPSLPSGVD
 AAYEVTSKD LVFIFKGNQFWAIRGNEVRAGYPRGIHTLGFPPTVRKIDAAISDKEKNK
 TYFFVEDKYWRFDEKRNSMEP
 GFPKQIAEDFPGIDSKIDAVFEEFGFFYFFTGSSQLEFDPNAKKVTHTLKSNSWLNCT
 RTRPLEQKLISEEDLAANDILDYKDDDDKV

Purity	> 80% as determined by SDS-PAGE and Coomassie blue staining.
Stability	Stable for 12 months from the date of receipt of the product under proper storage and handling conditions. Avoid repeated freeze-thaw cycles.
Storage	Store at -80 centigrade.
Concentration	>50 ug/mL as determined by microplate BCA method.
Preparation	Recombinant protein was captured through anti-DDK affinity column followed by conventional chromatography steps.
Protein Families	Druggable Genome, Protease
Full Length	Full L.

GENE INFORMATION

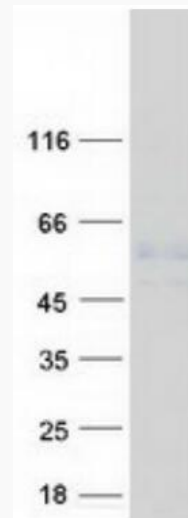
Gene Name	MMP3 matrix metalloproteinase 3 [Homo sapiens (human)]
Official Symbol	MMP3
Synonyms	SL-1; STMY; STR1; CHDS6; MMP-3; STMY1

 Tel: 1-631-559-9269 1-516-512-3133

 Email: info@creative-biomart.com  Fax: 1-631-938-8127

 45-1 Ramsey Road, Shirley, NY 11967, USA

Gene ID	4314
mRNA Refseq	NM_002422.5
Protein Refseq	NP_002413.1
MIM	185250
UniProt ID	P08254



Coomassie blue staining of purified MMP3 protein.

Tel: 1-631-559-9269 1-516-512-3133

Email: info@creative-biomart.com Fax: 1-631-938-8127

45-1 Ramsey Road, Shirley, NY 11967, USA