

Recombinant Human matrix metalloproteinase 8 Protein, His&Flag tagged

Cat. No. MMP8-087H Lot. No. (See product label)

SPECIFICATION

Product Overview

Recombinant human MMP8/CLG1 protein (P22894) (Phe 21-Gly 467) with His and Flag tag at the C-terminus was expressed in HEK293.

Species

Human

Source

HEK293

ProteinLength

21-467aa

Description

This gene encodes a member of the matrix metalloproteinase (MMP) family of proteins. These proteins are involved in the breakdown of extracellular matrix in embryonic development, reproduction, and tissue remodeling, as well as in disease processes, such as arthritis and metastasis. Proteolysis at different sites on this protein results in multiple active forms of the enzyme with distinct N-termini. This protein functions in the degradation of type I, II and III collagens. The gene is part of a cluster of MMP genes which localize to chromosome 11q22.3. Alternative splicing results in multiple transcript variants.

Tag

C-His&Flag

Molecular Mass

53.8 kDa

Endotoxin

Less than 1.0 EU/μg by the LAL method.

 Tel: 1-631-559-9269 1-516-512-3133

 Email: info@creative-biomart.com  Fax: 1-631-938-8127

 45-1 Ramsey Road, Shirley, NY 11967, USA

Purity	>95% as determined by SDS-PAGE.
Storage	Please avoid repeated freeze-thaw cycles. Samples are stable for up to twelve months from date of receipt at -20 to -80 centigrade. It is recommended that aliquot the reconstituted solution to minimize freeze-thaw cycles.
Storage Buffer	Lyophilized from a 0.2 µm filtered solution of PBS, pH7.4, 5% Trehalose, 5% mannitol.
Reconstitution	Reconstitute at 250 µg/mL in sterile water.

GENE INFORMATION

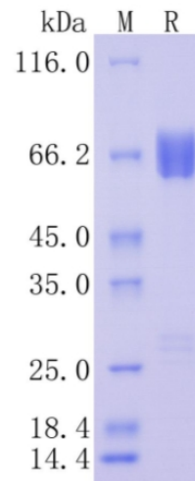
Gene Name	MMP8 matrix metalloproteinase 8 [Homo sapiens (human)]
Official Symbol	MMP8
Synonyms	MMP8; matrix metalloproteinase 8 (neutrophil collagenase); CLG1, matrix metalloproteinase 8 (neutrophil collagenase); neutrophil collagenase; PMNL collagenase; matrix metalloproteinase-8; matrix metalloproteinase 8 (neutrophil collagenase); HNC; CLG1; MMP-8; PMNL-CL;
Gene ID	4317
mRNA Refseq	NM_002424
Protein Refseq	NP_002415
MIM	120355
UniProt ID	P22894

 Tel: 1-631-559-9269 1-516-512-3133

 Email: info@creative-biomart.com  Fax: 1-631-938-8127

 45-1 Ramsey Road, Shirley, NY 11967, USA

**Protein on SDS-
PAGE under
reducing (R)
condition.**



 Tel: 1-631-559-9269 1-516-512-3133

 Email: info@creative-biomart.com  Fax: 1-631-938-8127

 45-1 Ramsey Road, Shirley, NY 11967, USA