

## Recombinant Human MMP8 protein, His-tagged

Cat. No. MMP8-1135H Lot. No. (See product label)

### SPECIFICATION

**Product Overview** Recombinant Human MMP8 protein (Leu101~Gly467) was fused to His-tag at the N-terminus and expressed in E.coli.

**Species** Human

**Source** E.coli

**ProteinLength** Leu101-Gly467

**Description** This gene encodes a member of the matrix metalloproteinase (MMP) family of proteins. These proteins are involved in the breakdown of extracellular matrix in embryonic development, reproduction, and tissue remodeling, as well as in disease processes, such as arthritis and metastasis. Proteolysis at different sites on this protein results in multiple active forms of the enzyme with distinct N-termini. This protein functions in the degradation of type I, II and III collagens. The gene is part of a cluster of MMP genes which localize to chromosome 11q22.3. Alternative splicing results in multiple transcript variants.

**Form** Freeze-dried powder. PBS, pH7.4, containing 0.01% SKL, 1mM DTT, 5% Trehalose and Proclin300.

**Molecular Mass** Predicted band size: 43.2 kDa; Observed band size: 43 kDa.

**Endotoxin** <1.0 EU per 1g (determined by the LAL method)

 Tel: 1-631-559-9269 1-516-512-3133

 Email: [info@creative-biomart.com](mailto:info@creative-biomart.com)  Fax: 1-631-938-8127

 45-1 Ramsey Road, Shirley, NY 11967, USA

<b>Purity</b>	> 97%
<b>Applications</b>	Positive Control; Immunogen; SDS-PAGE; WB.
<b>Stability</b>	The thermal stability is described by the loss rate. The loss rate was determined by accelerated thermal degradation test, that is, incubate the protein at 37 centigrade for 48h, and no obvious degradation and precipitation were observed. The loss rate is less than 5% within the expiration date under appropriate storage condition.
<b>Storage</b>	Avoid repeated freeze/thaw cycles. Store at 2-8 centigrade for one month. Aliquot and store at -80 centigrade for 12 months.
<b>Reconstitution</b>	Reconstitute in PBS (pH7.4) to a concentration of 0.1-1.0 mg/mL. Do not vortex.

## GENE INFORMATION

<b>Gene Name</b>	<a href="#">MMP8</a>
<b>Official Symbol</b>	<a href="#">MMP8</a>
<b>Synonyms</b>	HNC; CLG1; MMP-8; PMNL-CL
<b>Gene ID</b>	<a href="#">4317</a>
<b>mRNA Refseq</b>	<a href="#">NM_002424.3</a>
<b>Protein Refseq</b>	<a href="#">NP_002415.1</a>
<b>MIM</b>	<a href="#">120355</a>
<b>UniProt ID</b>	<a href="#">P22894</a>

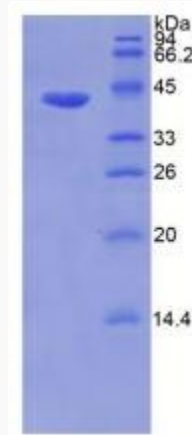
 Tel: 1-631-559-9269 1-516-512-3133

 Email: [info@creative-biomart.com](mailto:info@creative-biomart.com)  Fax: 1-631-938-8127

 45-1 Ramsey Road, Shirley, NY 11967, USA



**SDS-PAGE of MMP8-  
1135H**



Tel: 1-631-559-9269 1-516-512-3133

Email: [info@creative-biomart.com](mailto:info@creative-biomart.com) Fax: 1-631-938-8127

45-1 Ramsey Road, Shirley, NY 11967, USA