

Recombinant Human MMP8 protein, His-tagged

Cat. No. MMP8-648H Lot. No. (See product label)

SPECIFICATION

Product Overview	Recombinant Human MMP8 protein(P22894)(Phe21-Gly467), fused with C-terminal His tag, was expressed in HEK293.
Species	Human
Source	HEK293
ProteinLength	Phe21-Gly467
Tag	C-His
Form	Lyophilized from 0.22µm filtered solution in 50mM Tris, 10mM CaCl ₂ , 150mM NaCl (pH 7.5). Normally 8% trehalose is added as protectant before lyophilization.
Bio-activity	Immobilized Human MMP-8, His Tag at 5µg/ml (100µl/well) on the plate. Dose response curve for Anti-MMP-8 Antibody, hFc Tag with the EC ₅₀ of 1.93µg/ml determined by ELISA (QC Test).
Molecular Mass	The protein has a predicted MW of 52.2 kDa. Due to glycosylation, the protein migrates to 65-70 kDa based on Tris-Bis PAGE result.
Endotoxin	Less than 1EU per µg by the LAL method.
Purity	> 95% as determined by Tris-Bis PAGE;> 95% as determined by HPLC

 Tel: 1-631-559-9269 1-516-512-3133

 Email: info@creative-biomart.com  Fax: 1-631-938-8127

 45-1 Ramsey Road, Shirley, NY 11967, USA

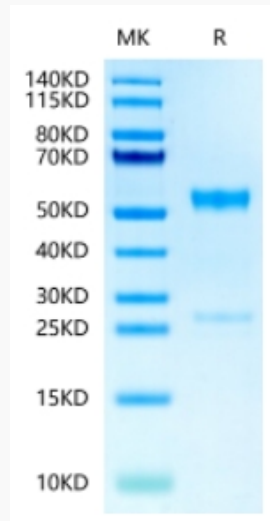
Storage	Reconstituted protein stable at -80°C for 12 months, 4°C for 1 week. Use a manual defrost freezer and avoid repeated freeze-thaw cycles.
Reconstitution	Centrifuge tubes before opening. Reconstituting to a concentration more than 100 µg/ml is recommended. Dissolve the lyophilized protein in distilled water.
GENE INFORMATION	
Gene Name	MMP8 matrix metalloproteinase 8 (neutrophil collagenase) [Homo sapiens]
Official Symbol	MMP8
Synonyms	MMP8; matrix metalloproteinase 8 (neutrophil collagenase); CLG1, matrix metalloproteinase 8 (neutrophil collagenase); neutrophil collagenase; PMNL collagenase; matrix metalloproteinase-8; matrix metalloproteinase 8 (neutrophil collagenase); HNC; CLG1; MMP-8; PMNL-CL;
Gene ID	4317
mRNA Refseq	NM_002424
Protein Refseq	NP_002415
MIM	120355
UniProt ID	P22894

 Tel: 1-631-559-9269 1-516-512-3133

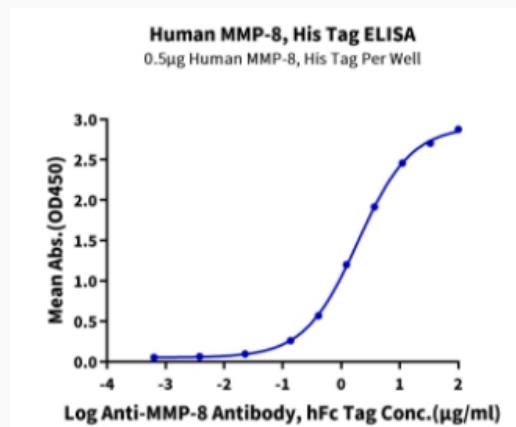
 Email: info@creative-biomart.com  Fax: 1-631-938-8127

 45-1 Ramsey Road, Shirley, NY 11967, USA

Tris-Bis PAGE



ELISA Data



Tel: 1-631-559-9269 1-516-512-3133

Email: info@creative-biomart.com Fax: 1-631-938-8127

45-1 Ramsey Road, Shirley, NY 11967, USA